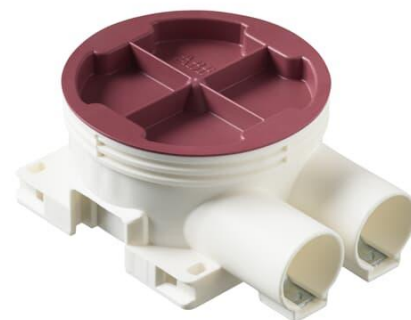


Low mounting box, branch.2-way

Low mounting box, height 38 mm,
branched 2-way



Typ: AU6.2

Produkt ID: 2TKA130032G1

GTIN: 6410011523155



The box has 2 branch inlets with locking devices for D20 conduits. A separate inlet can be attached to the side opposite the fixed inlets. The bottom of the box has two inlets. Inlets cannot be attached to the sides of the box, but the sides can be used to connect boxes with each other using a PMR474 interconnector cut level with the bottom of the box. The height of the box is 38 mm. Made of halogen free material (IEC/61249-2-21) and fulfills the requirements of the glow wire test according to the standard IEC/EN60670: 2005 (850 °C).

Teknisk specifikation

Dimensions

For plastic pipe:	Ø16/20mm
-------------------	----------

Packning

Förpackning:	100
Enhet:	st

ETIM Data

ETIM Version:	ETIM-9.0
ETIM Class:	EC002601

Mounting method:	Flush mounted (plaster)
Shape:	Round
Construction type:	Device connection box (round/square)
Model:	Single
Provided with revolving ring:	Nej
Connectable:	Ja
Equipped with:	None
Diameter:	71 mm
Length:	71 mm
Width:	71 mm
Depth:	71 mm
Inner depth:	36 mm
For number of electric fittings:	1
Mounting switching equipment:	Screwing
With screws:	Ja
Housing feed-through by break-out opening:	Ja
Housing feed-through by seal membrane:	Nej
Housing feed-through by nozzle:	Ja
Housing feed-through by step membrane:	Nej
For tube diameter:	20/25 mm
Pipe locking:	Ja
Pipe locking optional:	Nej
Inlet from the rear:	Ja
Number of inlets:	2
Number of included spouts:	2
Material:	Plastic
Halogen free:	Ja
Surface protection:	Untreated
Colour:	White
Degree of protection (IP):	IP44
Transparent cover:	Nej
Cover attachment:	Snapped on
Sealable:	Nej
With screening:	Nej
Air tight:	Nej

Produktblad

Low mounting box, height 38 mm, branched 2-way



Clamp position fixed:	Nej
Luminaire hook mounting:	Nej
Special application:	None