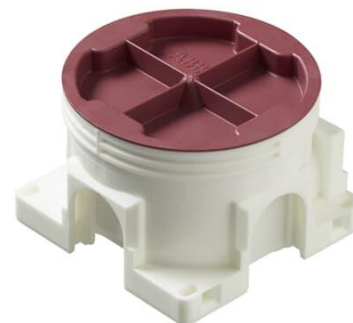


# Mounting box

Typ: AU3.2

Produkt ID: 2TKA130029G1

GTIN: 6410011523643



The mounting box is designed for installation in all new buildings and in prefabricated building elements, and can be used with cast materials. It has a total of five knock-out inlets, two of which are on the same side. The bottom of the box provides access for two rear inlets. The boxes can be connected to each other with the PMR474 interconnector. Made of halogen free material (IEC/61249-2-21) and fulfills the requirements of the glow wire test according to the standard IEC/EN60670: 2005 (850 °C).

## Teknisk specifikation

### Elektriska värden

Operating voltage:	400 V
--------------------	-------

### Thermal conditions

Operating temperature:	-25 ... 90 °C
------------------------	---------------

### Packning

Förpackning:	100
--------------	-----

Enhet:	st
--------	----

### ETIM Data

ETIM Version:	ETIM-9.0
---------------	----------

ETIM Class:	EC002601
-------------	----------

Mounting method:	Flush mounted (plaster)
Shape:	Round
Construction type:	Device connection box (round/square)
Model:	Single
Provided with revolving ring:	Nej
Connectable:	Ja
Equipped with:	None
Diameter:	71 mm
Length:	71 mm
Width:	71 mm
Depth:	71 mm
Inner depth:	45 mm
For number of electric fittings:	1
Mounting switching equipment:	Screwing
With screws:	Ja
Housing feed-through by break-out opening:	Nej
Housing feed-through by seal membrane:	Nej
Housing feed-through by nozzle:	Nej
Housing feed-through by step membrane:	Nej
For tube diameter:	20/25 mm
Pipe locking:	Ja
Pipe locking optional:	Nej
Inlet from the rear:	Ja
Material:	Plastic
Halogen free:	Ja
Surface protection:	Untreated
Colour:	White
Degree of protection (IP):	IP44
Transparent cover:	Nej
Cover attachment:	Snapped on
Sealable:	Nej
With screening:	Nej
Air tight:	Nej
Clamp position fixed:	Nej
Luminaire hook mounting:	Nej

Special application:

None