

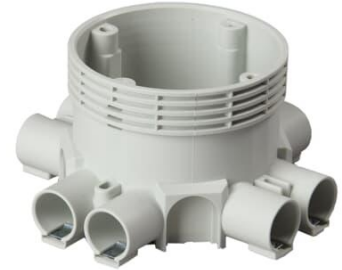
Junction box

Junction box, 73 mm

Typ: AU8.73

Produkt ID: 2TKA003967G1

GTIN: 6438199000435



The AU8 junction box is 73 mm high and has eight inlets for Ø 20 conduits. Two of the Ø 20 inlets are equipped with removable reducers for adjusting them to fit Ø 16 conduits. The box also has knock-outs for 4 side inlets and 4 bottom inlets. Made of halogen free material (IEC/61249-2-21) and fulfills the requirements of the glow wire test according to the standard IEC/EN60670: 2005 (850 °C). Max amount of conductors 40pcs.

Teknisk specifikation

Packning

Förpackning:	40
Enhet:	st

ETIM Data

ETIM Version:	ETIM-9.0
ETIM Class:	EC002601
Mounting method:	Flush mounted (plaster)
Shape:	Round
Construction type:	Cable junction box
Model:	Single
Provided with revolving ring:	Nej
Connectable:	Nej

Equipped with:	None
Diameter:	94 mm
Length:	135 mm
Width:	135 mm
Depth:	135 mm
Inner depth:	69 mm
For number of electric fittings:	1
Mounting switching equipment:	Screwing
With screws:	Nej
Housing feed-through by break-out opening:	Ja
Housing feed-through by seal membrane:	Nej
Housing feed-through by nozzle:	Ja
Housing feed-through by step membrane:	Nej
For tube diameter:	20/25 mm
Pipe locking:	Ja
Pipe locking optional:	Nej
Inlet from the rear:	Ja
Number of inlets:	8
Number of included spouts:	8
Material:	Plastic
Halogen free:	Ja
Surface protection:	Untreated
Colour:	White
Degree of protection (IP):	IP3X
Transparent cover:	Nej
Cover attachment:	Snapped on
Sealable:	Nej
With screening:	Nej
Air tight:	Nej
Clamp position fixed:	Nej
Luminaire hook mounting:	Nej
Special application:	None