

# Mounting box

Mounting box, 12-13/24-26 mm board

Typ: AU60.1

Produkt ID: 2TKA001744G1

GTIN: 6418677334788



The mounting box has a rotating ring for adjusting the screw holes for device installation in optimal angle and screw distance is c/c 60mm. The green adapter ring, delivered with the box, is used in single-board walls (12-13 mm). The ring is removed when the wall thickness is two boards (24-26 mm). The box has two fixed inlets, one of them is open and both inlets are equipped with a locking device in metal for reliable connection between the conduits and the box. Both flexipipe and stiff conduits can be connected to the inlets and the inlets have 16/20 mm piping adapters. In addition, there are four knock outs on the sides and two in bottom for different inlets.

The box is also tested in firewalls EI60 (mounting instruction separately).

Manufactured from halogen free material (IEC/61249-2-21), the box complies with the IEC/EN60670:2005 glow wire test (850 °C).

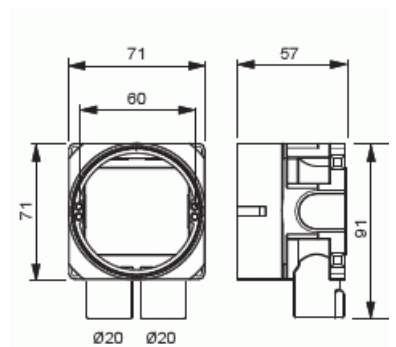
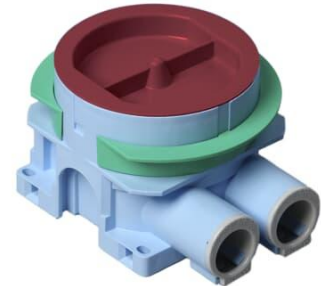
## Teknisk specifikation

### Elektriska värden

Rated voltage: 400 V

### Thermal conditions

Operating temperature: -25 ... 60 °C



## Dimensions

For plastic pipe:	Ø16/20mm
-------------------	----------

## Certifications

Approval:	SP SITAC 1002, SC0854-09
-----------	--------------------------

## Packning

Förpackning:	80
Enhet:	st

## ETIM Data

ETIM Version:	ETIM-9.0
ETIM Class:	EC002601
Mounting method:	Flush mounted (plaster)
Shape:	Round
Construction type:	Device connection box (round/square)
Model:	Single
Provided with revolving ring:	Ja
Connectable:	Ja
Equipped with:	None
Diameter:	71 mm
Length:	71 mm
Width:	71 mm
Depth:	71 mm
Inner depth:	54 mm
For number of electric fittings:	1
Mounting switching equipment:	Screwing
With screws:	Ja
Housing feed-through by break-out opening:	Ja
Housing feed-through by seal membrane:	Nej
Housing feed-through by nozzle:	Ja
Housing feed-through by step membrane:	Nej
For tube diameter:	16/20 mm



Pipe locking:	Ja
Pipe locking optional:	Nej
Inlet from the rear:	Ja
Number of inlets:	2
Number of included spouts:	2
Material:	Plastic
Halogen free:	Ja
Surface protection:	Untreated
Colour:	Blue
Degree of protection (IP):	IP44
Cover model:	Construction protective cover
Transparent cover:	Nej
Cover attachment:	Snapped on
Sealable:	Nej
With screening:	Nej
Air tight:	Nej
Clamp position fixed:	Nej
Luminaire hook mounting:	Nej
Special application:	None