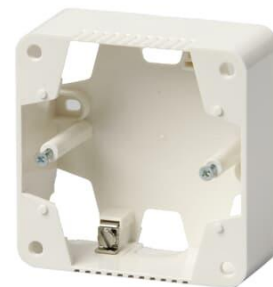


Surface mounting frame

Surface mounting frame, Jussi, 1-gang,
for 85mm cover plates, h=36



Typ: 2551-510-212

Produkt ID: 2TKA000863G1

GTIN: 6410024065710



Surface mounting frame for Jussi flush mounting products. Use with 85mm cover frames. The height of the frame is 36mm.

Teknisk specifikation

Klassificering

| | |
|------------------|------|
| Enclosure class: | IP20 |
|------------------|------|

Packning

| | |
|--------------|--------|
| Förpackning: | 10/100 |
| Enhet: | st |

ETIM Data

| | |
|--|-------------------------|
| ETIM Version: | ETIM-9.0 |
| ETIM Class: | EC000080 |
| Assembly arrangement: | Housing base |
| Suitable for modular domestic switching devices: | Nej |
| Number of units: | 1 |
| Mounting direction: | Horizontal and vertical |
| Shape: | Round |
| Material: | Plastic |

| | |
|----------------------------|---------------|
| Material quality: | Thermoplastic |
| Halogen free: | Ja |
| Surface protection: | Untreated |
| Surface finishing: | Glossy |
| Colour: | White |
| RAL-number (similar): | 9010 |
| Transparent: | Nej |
| With cover frame: | Nej |
| With duct entry: | Nej |
| With cable entry: | Nej |
| With screw gland entry: | Nej |
| Shock resistant: | Nej |
| Degree of protection (IP): | IP21 |
| Width: | 85 mm |
| Height: | 36 mm |
| Depth: | 85 mm |