

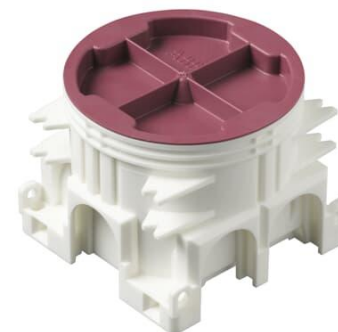
Mounting box

AU4.2 Mounting box White IP3X

Typ: AU4.2

Produkt ID: 2TKA00005780

GTIN: 6438199026329



Mounting box for hollow wall installations and concrete casting walls.

Box height is 59 mm and there is plenty of space for electrical installations. Several screw towers for easy and flexible socket outlet/switch installation with 60 mm screw c/c distance. Also box has longer screws compared to previous versions to give more flexibility in the installations.

Box has integrated gypsum board supports and six knock out inlets on sides and three in the bottom. Wide range of accessories available such as different sizes of pipe inlets and extension rings.

Box is compatible with AS4.2 and AS95 box supports. Multifunctional AS4.2 accessory can be used as strain relief, interconnector for c/c71 mm box combinations and as box support for 66 mm frame. Also you are able to use two of them together for 95 mm frame box support. For frame sizes between 66 and 95 mm we recommend to use AS95 box support.

Box lid is made from recycled material.

Box made of halogen free material (IEC/61249-2-21) and fulfills the requirements of the glow wire test according to the standard IEC/EN60670-1 (850 °C).

Teknisk specifikation

Packning

Förpackning:	100
Enhet:	st

ETIM Data

ETIM Version:	ETIM-9.0
ETIM Class:	EC002601
Mounting method:	Other
Shape:	Round
Construction type:	Device connection box (round/square)
Model:	Single
Provided with revolving ring:	Nej
Equipped with:	None
Diameter:	71 mm
Length:	58 mm
Width:	71 mm
Depth:	58 mm
Inner depth:	55 mm
Suitable for wall/board thickness:	12...24 mm
For number of electric fittings:	1
Mounting switching equipment:	Screwing
With screws:	Ja
Housing feed-through by break-out opening:	Ja
Housing feed-through by seal membrane:	Nej
Housing feed-through by nozzle:	Nej
Housing feed-through by step membrane:	Nej
For tube diameter:	20/25 mm
Pipe locking:	Nej
Pipe locking optional:	Ja
Inlet from the rear:	Ja
Number of inlets:	9
Material:	Plastic
Halogen free:	Ja
Surface protection:	Untreated
Colour:	White
Degree of protection (IP):	IP3X
Cover model:	Blind cover
Transparent cover:	Nej

Cover attachment:	Snapped on
Sealable:	Nej
With screening:	Nej
Air tight:	Nej
Clamp position fixed:	Nej
Luminaire hook mounting:	Nej
Special application:	None
With partition panel:	Nej