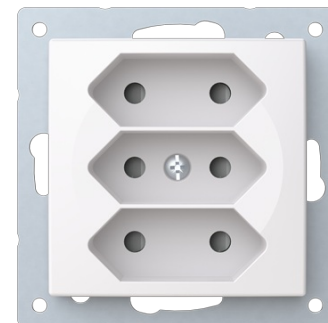


Socket outlet

Socket outlet Without imprint White - Saga



Typ: 303UC-916

Produkt ID: 2TKA00004877

GTIN: 6438199009643



3-gang Euro socket outlet with center plate. There are terminals for each contact of the socket outlet for max 4 rigid wires and 2 X-terminals for 2-rigid wires. The socket outlet insert without the cover plate is screen-protected. Bio-circular plastics used in the centre plate.

Teknisk specifikation

Elektriska värden

| | |
|------------------|-------|
| Nominal current: | 2.5 A |
| Nominal voltage: | 250 V |

Klassificering

| | |
|---|------|
| Suitable for degree of protection (IP): | IP21 |
|---|------|

Packning

| | |
|--------------|---------------|
| Förpackning: | 1/10/100/1800 |
| Enhet: | st |

ETIM Data

| | |
|---------------|----------|
| ETIM Version: | ETIM-9.0 |
| ETIM Class: | EC000125 |

| | |
|-----------------------------------|------------------------------|
| Model: | EURO plug (CEE 7/16) |
| Number of active pins (round): | 2 |
| With signal lamp: | Nej |
| Number of units: | 3 |
| Number of phases: | 1 |
| Imprint/indication: | None |
| Connection type: | Push-in clamp |
| With hinged lid: | Nej |
| With enhanced contact protection: | Ja |
| Label space/information surface: | Nej |
| Colour: | White |
| RAL-number (similar): | 9003 |
| Metallic colour: | Nej |
| Transparent: | Nej |
| Lockable: | Nej |
| Eject-mechanism: | Nej |
| Insulated mounting: | Nej |
| With function lighting: | Nej |
| With orientation lighting: | Nej |
| Over voltage protection: | Nej |
| Fault current protection: | Nej |
| With miniature fuse: | Nej |
| Special power supply: | No special power supply |
| Mounting method: | Flush mounted (plaster) |
| Type of fastening: | Mounting with claw and screw |
| Material: | Plastic |
| Material quality: | Thermoplastic |
| Halogen free: | Ja |
| Surface protection: | Untreated |
| Surface finishing: | Glossy |
| Anti-bacterial treatment: | Nej |
| With loop through function: | Nej |
| With on/off switch: | Nej |
| Rotated central insert: | Nej |

| | |
|--|------------|
| Frequency: | 50...60 Hz |
| Device width: | 71 mm |
| Device height: | 71 mm |
| Device depth: | 35 mm |
| Min. depth of built-in installation box: | 25 mm |