

---

## Surf. Mount. frame

Surface mounting frame, Impressivo, 85mm, h=40mm, 1-gang, white matt

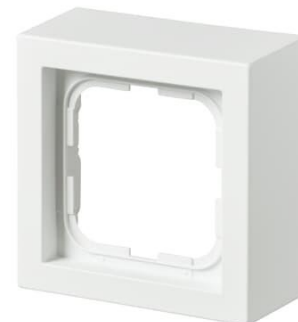
---

**Typ:** 1721S85-884

**Produkt ID:** 2TKA00004856

**GTIN:** 6438199009445

IP21



Impressivo flush mounting products are able to be surface mounted with surface mounting frames and surface mounting box (2456.26). Using center plates with lid the socket outlets are water protected (IP44). The switches and push switches are also water protected (IP44) when using screw mounted rocker frames (2474 or 2475). In the cases of the other products than socket outlets and switches the water protection depends on the water protection of the center plate. The manufacture material is a durable high quality plastic. The surface is glossy and easy to keep clean. Cleaning with a mild, standard household detergent. Be careful when cleaning with a powerful dissolvent.

## Teknisk specifikation

### Packning

Förpackning:	1/50
Enhet:	st

### ETIM Data

ETIM Version:	ETIM-9.0
ETIM Class:	EC000080
Suitable for modular domestic switching devices:	Nej
Number of units:	1

Mounting direction:	Horizontal and vertical
Shape:	Rectangular
Material:	Plastic
Material quality:	Thermoplastic
Halogen free:	Nej
Surface protection:	Lacquered
Surface finishing:	Matt
Colour:	White
RAL-number (similar):	9016
Transparent:	Nej
With cover frame:	Nej
With duct entry:	Nej
With cable entry:	Nej
With screw gland entry:	Nej
Shock resistant:	Nej
Degree of protection (IP):	IP21
Width:	85 mm
Height:	85 mm
Depth:	40 mm