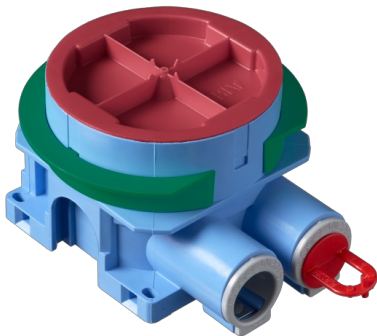


**Mounting box**

Mounting box, 1-3 board layers

**Typ:** AU60.10  
**Produkt ID:** 2TKA00004282  
**GTIN:** 6438199008165



The mounting box includes a rotating, steplessly adjustable extension ring enabling installation on boards with a thickness of 12-40mm. Screw distance is c/c 60mm. The green adapter ring, delivered with the box, is used in single-board walls (12-13 mm). The ring is removed when the wall thickness is two boards (24-26 mm). In case of triple boards, extension ring is lifted to needed height. The box has two fixed inlets, both of them are open (other sealed with a plug) and both inlets are equipped with a locking device in metal for reliable connection between the conduits and the box. Both flexipipe and stiff/rigid conduits can be connected to the inlets and both inlets have 16/20 mm piping adapters. The extension ring can be tilted 0-4°. Made of halogen free material (IEC/61249-2-21) and fulfills the requirements of the glow wire test according to the standard IEC/EN60670: 2005 (850 °C).

**Teknisk specifikation**

**Elektriska värden**

Rated voltage:	400 V
----------------	-------

**Thermal conditions**

Operating temperature:	-25 ... 60 °C
------------------------	---------------

**Dimensions**

For plastic pipe:	Ø16/20mm
-------------------	----------

## Packning

Förpackning:	80
Enhet:	st

## ETIM Data

ETIM Version:	ETIM-9.0
ETIM Class:	EC002601
Mounting method:	Other
Shape:	Round
Construction type:	Device connection box (round/square)
Model:	Single
Provided with revolving ring:	Ja
Connectable:	Ja
Equipped with:	None
Diameter:	71 mm
Length:	71 mm
Width:	71 mm
Depth:	71 mm
Inner depth:	54 mm
For number of electric fittings:	1
Mounting switching equipment:	Screwing
With screws:	Ja
Housing feed-through by break-out opening:	Ja
Housing feed-through by seal membrane:	Nej
Housing feed-through by nozzle:	Ja
Housing feed-through by step membrane:	Nej
For tube diameter:	16/20 mm
Pipe locking:	Ja
Pipe locking optional:	Nej
Inlet from the rear:	Ja
Number of inlets:	9
Number of included spouts:	2
Material:	Plastic
Halogen free:	Ja



Surface protection:	Untreated
Colour:	Blue
Degree of protection (IP):	IP3X
Cover model:	Construction protective cover
Transparent cover:	Nej
Cover attachment:	Snapped on
Sealable:	Nej
With screening:	Nej
Air tight:	Nej
Clamp position fixed:	Nej
Luminaire hook mounting:	Nej
Special application:	None