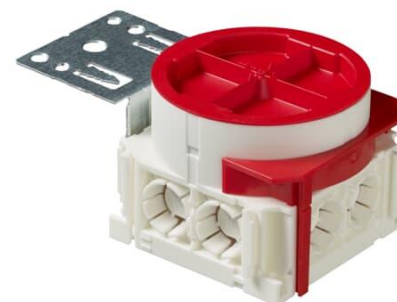


# Mounting box

Mounting box with truss fixture



**Typ:** AU80.2

**Produkt ID:** 2TKA00002541

**GTIN:** 6438199004273



The box is mentioned for the installations with the flexible pipe. There is six knock outs for 16 mm pipes and two for the 20 mm pipe. In the bottom there is two knock outs for the bottom inlets. The mounting box includes a rotating, steplessly adjustable extension ring with two locking wings. A truss fixture and one red half circle are enabling installation on boards with a thickness of 12- 39 mm. The minimum installation depth is 45 mm and overall height 58-73 mm. Made of halogen free material (IEC/61249-2-21) and fulfills the requirements of the glow wire test according to the standard IEC/EN60670: 2005 (850 °C).

## Teknisk specifikation

### Elektriska värden

Operating voltage:	400 V
--------------------	-------

### Thermal conditions

Operating temperature:	-25 ... 90 °C
------------------------	---------------

### Packning

Förpackning:	60
Enhet:	st

### ETIM Data

ETIM Version:	ETIM-9.0
ETIM Class:	EC002601
Mounting method:	Flush mounted (plaster)
Shape:	Round
Construction type:	Device connection box (round/square)
Model:	Single
Provided with revolving ring:	Ja
Connectable:	Ja
Equipped with:	Mounting plate
Diameter:	71 mm
Length:	124 mm
Width:	74 mm
Depth:	124 mm
Inner depth:	54 mm
For number of electric fittings:	1
Mounting switching equipment:	Screwing
With screws:	Ja
Housing feed-through by break-out opening:	Ja
Housing feed-through by seal membrane:	Nej
Housing feed-through by nozzle:	Nej
Housing feed-through by step membrane:	Nej
For tube diameter:	16 mm
Pipe locking:	Ja
Pipe locking optional:	Nej
Inlet from the rear:	Ja
Number of inlets:	8
Material:	Plastic
Halogen free:	Ja
Surface protection:	Untreated
Colour:	White
Degree of protection (IP):	IP3X
Transparent cover:	Nej
Cover attachment:	Snapped on
Sealable:	Nej
With screening:	Nej

Air tight:	Nej
Clamp position fixed:	Nej
Luminaire hook mounting:	Nej
Special application:	None