

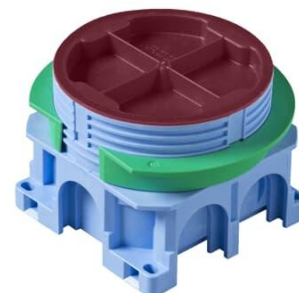
Mounting box

for 12-13/24-26 mm board

Typ: AU60.5

Produkt ID: 2TKA00001481

GTIN: 6438199003405



The mounting box has a total of six knock-out inlets, two of which are on the same side. The bottom of the box provides access for two rear inlets. The green adapter ring, delivered with the box, is used in single-board walls (12-13 mm). The ring is removed when the wall thickness is two boards (24-26 mm). The boxes can be connected to each other with the PMR474 interconnector. Made of halogen free material (IEC/61249-2-21) and fulfills the requirements of the glow wire test according to the standard IEC/EN60670: 2005 (850 °C).

Teknisk specifikation

Thermal conditions

| | |
|------------------------|---------------|
| Operating temperature: | -25 ... 60 °C |
|------------------------|---------------|

Packning

| | |
|--------------|----|
| Förpackning: | 80 |
| Enhet: | st |

ETIM Data

| | |
|------------------|-------------------------|
| ETIM Version: | ETIM-9.0 |
| ETIM Class: | EC002601 |
| Mounting method: | Flush mounted (plaster) |
| Shape: | Round |

| | |
|--|--------------------------------------|
| Construction type: | Device connection box (round/square) |
| Model: | Single |
| Provided with revolving ring: | Nej |
| Connectable: | Ja |
| Equipped with: | None |
| Diameter: | 71 mm |
| Length: | 71 mm |
| Width: | 71 mm |
| Depth: | 71 mm |
| Inner depth: | 54 mm |
| For number of electric fittings: | 1 |
| Mounting switching equipment: | Screwing |
| With screws: | Ja |
| Housing feed-through by break-out opening: | Ja |
| Housing feed-through by seal membrane: | Nej |
| Housing feed-through by nozzle: | Nej |
| Housing feed-through by step membrane: | Nej |
| For tube diameter: | 20/25 mm |
| Pipe locking: | Nej |
| Pipe locking optional: | Ja |
| Inlet from the rear: | Ja |
| Material: | Plastic |
| Halogen free: | Ja |
| Surface protection: | Untreated |
| Colour: | Blue |
| Degree of protection (IP): | IP44 |
| Cover model: | Construction protective cover |
| Transparent cover: | Nej |
| Cover attachment: | Snapped on |
| Sealable: | Nej |
| With screening: | Nej |
| Air tight: | Nej |
| Clamp position fixed: | Nej |
| Luminaire hook mounting: | Nej |
| Special application: | None |

