

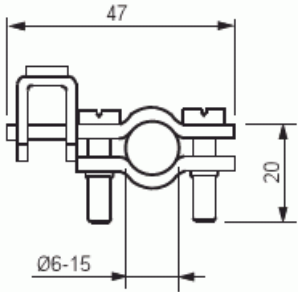
Earthing terminal

Earthing terminal D = 6 - 15 mm

Type: AM9
GTIN: 6410019130492



The earthing terminal AM9 is mainly used to connect earthing conductors to various kinds of pipework, in sizes Ø 6-15 mm. The earthing terminal can also be used to connect earthing conductors to a building's concrete reinforcement. A suitable concrete reinforcement bar has a diameter of between 8-15 mm. The earthing conductor has one 4-35 mm² strap. If there is a need for a 25 mm² copper connector, two AM9 terminals must be used in parallel. The conductor bar is made of tinned copper and the strap is made of zinc-plated, yellow-passivated steel.



Technical specification

General Information

Product ID:	2TKA110009G1
-------------	--------------

Packing

Package:	1/50
Unit:	PCS

ETIM Data

Clamping/chucking range:	6...15 mm
Number of conductors:	1