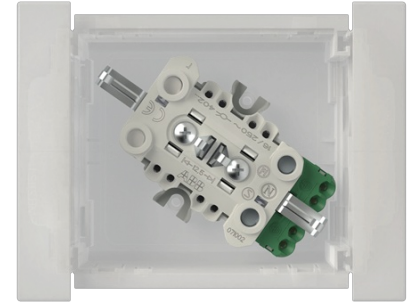

Socket outlet unit

Socket outlet unit 16 A

Type: AUD11DSO

Product ID: 2TKA00005705

GTIN: 6438199023113



Socket outlet with terminals for each contact of the socket outlet for max 4 rigid wires. The socket outlet insert without the cover plate is screen-protected.

Technical specification

Electrical quantities

Nominal current:	16 A
Nominal voltage:	250 V

Classification

Suitable for degree of protection (IP):	IP20
---	------

ETIM Data

ETIM Version:	ETIM-9.0
ETIM Class:	EC000125
Number of active pins (round):	2
With signal lamp:	No
Number of units:	2
Number of phases:	1
Imprint/indication:	None
Connection type:	Push-in clamp
With hinged lid:	No

Product Card

Socket outlet unit 16 A



With enhanced contact protection:	Yes
Label space/information surface:	No
Colour:	White
RAL-number (similar):	9010
Metallic colour:	No
Transparent:	No
Lockable:	No
Eject-mechanism:	No
Insulated mounting:	No
With function lighting:	No
With orientation lighting:	No
Over voltage protection:	No
Fault current protection:	No
With miniature fuse:	No
Special power supply:	No special power supply
Mounting method:	Wall duct
Type of fastening:	Snap mounting (engagement)
Material:	Plastic
Material quality:	Thermoplastic
Halogen free:	Yes
Surface protection:	Untreated
Surface finishing:	Matt
Anti-bacterial treatment:	No
With loop through function:	No
With on/off switch:	No
Rotated central insert:	No
Frequency:	50 Hz
Device width:	47 mm
Device height:	110 mm
Device depth:	85 mm
Compatible with Apple HomeKit:	No
Compatible with Amazon Alexa:	No
Compatible with Google Assistant:	No
IFTTT support available:	No

Product Card

Socket outlet unit 16 A



With Wi-Fi signal repeater: No

With built-in bluetooth speaker: No
