

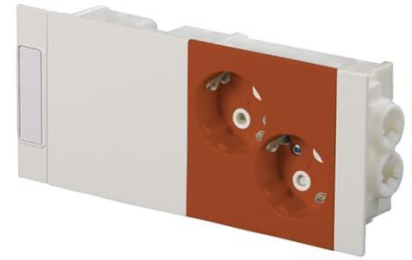
Product Card

Prefabricated socket outlet unit Without imprint Protective contact (SCHUKO) Orange - Impressivo



AUD11-03

Prefabricated socket outlet unit Without imprint Protective contact (SCHUKO) Orange - Impressivo



Type: AUD11-03

Product ID: 2TKA00005303

GTIN: 6438199012902

AUD11-03 Prefabricated socket outlet unit, 2-gang Schuko, orange

Technical specification

Electrical quantities

Nominal current:	16 A
Nominal voltage:	250 V

Classification

Suitable for degree of protection (IP):	IP20
---	------

ETIM Data

ETIM Version:	ETIM-9.0
ETIM Class:	EC000125
Number of active pins (round):	2
With signal lamp:	No
Number of socket outlets switchable:	1
Number of phases:	1
Imprint/indication:	None
Connection type:	Push-in clamp
With hinged lid:	No

Product Card

Prefabricated socket outlet unit Without imprint Protective contact (SCHUKO) Orange - Impressivo



With enhanced contact protection:	Yes
Label space/information surface:	No
Colour:	Orange
RAL-number (similar):	2000
Metallic colour:	No
Transparent:	No
Lockable:	No
Eject-mechanism:	No
Insulated mounting:	No
With function lighting:	No
With orientation lighting:	No
Over voltage protection:	No
Fault current protection:	No
With miniature fuse:	No
Special power supply:	No special power supply
Mounting method:	Wall duct
Type of fastening:	Snap mounting (engagement)
Material:	Plastic
Material quality:	Thermoplastic
Halogen free:	Yes
Surface protection:	Untreated
Surface finishing:	Glossy
Anti-bacterial treatment:	No
With loop through function:	No
With on/off switch:	No
Rotated central insert:	No
Frequency:	50 Hz
Device width:	45 mm
Device height:	85 mm
Device depth:	190 mm