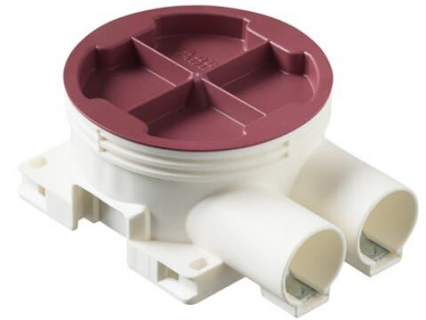


Low mounting box, branch.2-way

Low mounting box, height 38 mm,
branched 2-way



Tyyppi: AU6.2

Tuotekoodi: 2TKA130032G1

GTIN: 6410011523155



The box has 2 branch inlets with locking devices for D20 conduits. A separate inlet can be attached to the side opposite the fixed inlets. The bottom of the box has two inlets. Inlets cannot be attached to the sides of the box, but the sides can be used to connect boxes with each other using a PMR474 interconnector cut level with the bottom of the box. The height of the box is 38 mm. Made of halogen free material (IEC/61249-2-21) and fulfills the requirements of the glow wire test according to the standard IEC/EN60670: 2005 (850 °C).

Tekniset tiedot

Dimensions

For plastic pipe:	Ø16/20mm
-------------------	----------

Pakkaus

Paketti:	100
Yksikkö:	kpl

ETIM Data

ETIM Version:	ETIM-9.0
---------------	----------

ETIM Class:	EC002601
Mounting method:	Flush mounted (plaster)
Shape:	Round
Construction type:	Device connection box (round/square)
Model:	Single
Provided with revolving ring:	Ei
Connectable:	Kyllä
Equipped with:	None
Diameter:	71 mm
Length:	71 mm
Width:	71 mm
Depth:	71 mm
Inner depth:	36 mm
For number of electric fittings:	1
Mounting switching equipment:	Screwing
With screws:	Kyllä
Housing feed-through by break-out opening:	Kyllä
Housing feed-through by seal membrane:	Ei
Housing feed-through by nozzle:	Kyllä
Housing feed-through by step membrane:	Ei
For tube diameter:	20/25 mm
Pipe locking:	Kyllä
Pipe locking optional:	Ei
Inlet from the rear:	Kyllä
Number of inlets:	2
Number of included spouts:	2
Material:	Plastic
Halogen free:	Kyllä
Surface protection:	Untreated
Colour:	White
Degree of protection (IP):	IP44
Transparent cover:	Ei
Cover attachment:	Snapped on
Sealable:	Ei

Tuotekortti

Low mounting box, height 38 mm, branched 2-way



With screening:	Ei
Air tight:	Ei
Clamp position fixed:	Ei
Luminaire hook mounting:	Ei
Special application:	None