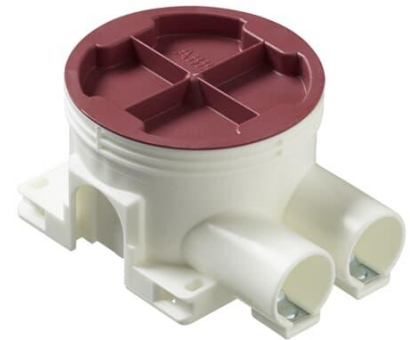


Mounting box, branched 2-way

Tyyppi: AU5.2

Tuotekoodi: 2TKA130031G1

GTIN: 6410011523032



The characteristics of this box are the same as the AU3.2; the difference is in the inlets. The box has 2 branch inlets for D20 conduits. There are also 3 knock-out on the side, and 2 on the bottom. Made of halogen free material (IEC/61249-2-21) and fulfills the requirements of the glow wire test according to the standard IEC/EN60670: 2005 (850 °C).

Tekniset tiedot

Dimensions

| | |
|-------------------|----------|
| For plastic pipe: | Ø16/20mm |
|-------------------|----------|

Pakkaus

| | |
|----------|-----|
| Paketti: | 100 |
| Yksikkö: | kpl |

ETIM Data

| | |
|--------------------|--------------------------------------|
| ETIM Version: | ETIM-9.0 |
| ETIM Class: | EC002601 |
| Mounting method: | Flush mounted (plaster) |
| Shape: | Round |
| Construction type: | Device connection box (round/square) |

| | |
|--|------------|
| Model: | Single |
| Provided with revolving ring: | Ei |
| Connectable: | Kyllä |
| Equipped with: | None |
| Diameter: | 71 mm |
| Length: | 71 mm |
| Width: | 71 mm |
| Depth: | 71 mm |
| Inner depth: | 45 mm |
| For number of electric fittings: | 1 |
| Mounting switching equipment: | Screwing |
| With screws: | Kyllä |
| Housing feed-through by break-out opening: | Kyllä |
| Housing feed-through by seal membrane: | Ei |
| Housing feed-through by nozzle: | Kyllä |
| Housing feed-through by step membrane: | Ei |
| For tube diameter: | 20/25 mm |
| Pipe locking: | Kyllä |
| Pipe locking optional: | Ei |
| Inlet from the rear: | Kyllä |
| Number of inlets: | 2 |
| Number of included spouts: | 2 |
| Material: | Plastic |
| Halogen free: | Kyllä |
| Surface protection: | Untreated |
| Colour: | White |
| Degree of protection (IP): | IP44 |
| Transparent cover: | Ei |
| Cover attachment: | Snapped on |
| Sealable: | Ei |
| With screening: | Ei |
| Air tight: | Ei |
| Clamp position fixed: | Ei |
| Luminaire hook mounting: | Ei |

Tuotekortti

Mounting box, branched 2-way



Special application:

None