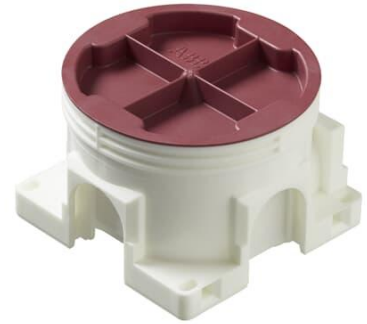


Mounting box

Tyyppi: AU3.2

Tuotekoodi: 2TKA130029G1

GTIN: 6410011523643



The mounting box is designed for installation in all new buildings and in prefabricated building elements, and can be used with cast materials. It has a total of five knock-out inlets, two of which are on the same side. The bottom of the box provides access for two rear inlets. The boxes can be connected to each other with the PMR474 interconnector. Made of halogen free material (IEC/61249-2-21) and fulfills the requirements of the glow wire test according to the standard IEC/EN60670: 2005 (850 °C).

Tekniset tiedot

Sähkösuureet

Operating voltage:	400 V
--------------------	-------

Thermal conditions

Operating temperature:	-25 ... 90 °C
------------------------	---------------

Pakkaus

Paketti:	100
Yksikkö:	kpl

ETIM Data

ETIM Version:	ETIM-9.0
---------------	----------

ETIM Class:	EC002601
Mounting method:	Flush mounted (plaster)
Shape:	Round
Construction type:	Device connection box (round/square)
Model:	Single
Provided with revolving ring:	Ei
Connectable:	Kyllä
Equipped with:	None
Diameter:	71 mm
Length:	71 mm
Width:	71 mm
Depth:	71 mm
Inner depth:	45 mm
For number of electric fittings:	1
Mounting switching equipment:	Screwing
With screws:	Kyllä
Housing feed-through by break-out opening:	Ei
Housing feed-through by seal membrane:	Ei
Housing feed-through by nozzle:	Ei
Housing feed-through by step membrane:	Ei
For tube diameter:	20/25 mm
Pipe locking:	Kyllä
Pipe locking optional:	Ei
Inlet from the rear:	Kyllä
Material:	Plastic
Halogen free:	Kyllä
Surface protection:	Untreated
Colour:	White
Degree of protection (IP):	IP44
Transparent cover:	Ei
Cover attachment:	Snapped on
Sealable:	Ei
With screening:	Ei
Air tight:	Ei

Clamp position fixed:	Ei
Luminaire hook mounting:	Ei
Special application:	None