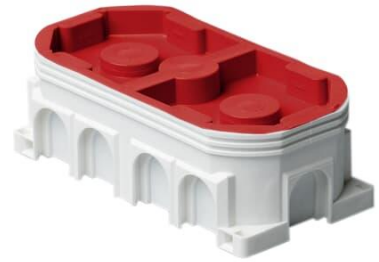


Double mounting box

Tyyppi: AU17.2

Tuotekoodi: 2TKA130026G1

GTIN: 6410011523896



The box AU17.2 has knock-outs for 11 inlets on the side, and 6 on the bottom. It can accommodate a device with a triple inlet.

If necessary, the box may be divided in two by using partition plate PMR345. Made of halogen free material (IEC/61249-2-21) and fulfills the requirements of the glow wire test according to the standard IEC/EN60670: 2005 (850 °C).

Tekniset tiedot

Pakkaus

Paketti:	50
Yksikkö:	kpl

ETIM Data

ETIM Version:	ETIM-9.0
ETIM Class:	EC002601
Mounting method:	Flush mounted (plaster)
Shape:	Rectangular
Construction type:	Device connection box (round/square)
Model:	Double
Provided with revolving ring:	Ei
Connectable:	Kyllä
Equipped with:	None

Length:	142 mm
Width:	71 mm
Depth:	142 mm
Inner depth:	45 mm
For number of electric fittings:	1
Mounting switching equipment:	Screwing
With screws:	Kyllä
Housing feed-through by break-out opening:	Ei
Housing feed-through by seal membrane:	Ei
Housing feed-through by nozzle:	Ei
Housing feed-through by step membrane:	Ei
For tube diameter:	20/25 mm
Pipe locking:	Kyllä
Pipe locking optional:	Ei
Inlet from the rear:	Kyllä
Material:	Plastic
Halogen free:	Kyllä
Surface protection:	Untreated
Colour:	White
Degree of protection (IP):	IP44
Transparent cover:	Ei
Cover attachment:	Snapped on
Sealable:	Ei
With screening:	Ei
Air tight:	Ei
Clamp position fixed:	Ei
Luminaire hook mounting:	Ei
Special application:	None