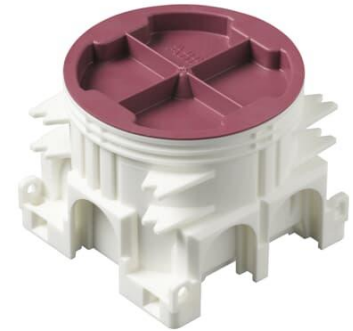


# Mounting box

## AU4.2 Mounting box White IP3X

**Tyyppi:** AU4.2**Tuotekoodi:** 2TKA00005780**GTIN:** 6438199026329**IP3X**

Mounting box for hollow wall installations and concrete casting walls. Box height is 59 mm and there is plenty of space for electrical installations. Several screw towers for easy and flexible socket outlet/switch installation with 60 mm screw c/c distance. Also box has longer screws compared to previous versions to give more flexibility in the installations.

Box has integrated gypsum board supports and six knock out inlets on sides and three in the bottom. Wide range of accessories available such as different sizes of pipe inlets and extension rings.

Box is compatible with AS4.2 and AS95 box supports. Multifunctional AS4.2 accessory can be used as strain relief, interconnector for c/c71 mm box combinations and as box support for 66 mm frame. Also you are able to use two of them together for 95 mm frame box support. For frame sizes between 66 and 95 mm we recommend to use AS95 box support.

Box lid is made from recycled material.

Box made of halogen free material (IEC/61249-2-21) and fulfills the requirements of the glow wire test according to the standard IEC/EN60670-1 (850 °C).

## Tekniset tiedot

### Pakkaus

Paketti:	100
Yksikkö:	kpl

**ETIM Data**

ETIM Version:	ETIM-9.0
ETIM Class:	EC002601
Mounting method:	Other
Shape:	Round
Construction type:	Device connection box (round/square)
Model:	Single
Provided with revolving ring:	Ei
Equipped with:	None
Diameter:	71 mm
Length:	58 mm
Width:	71 mm
Depth:	58 mm
Inner depth:	55 mm
Suitable for wall/board thickness:	12...24 mm
For number of electric fittings:	1
Mounting switching equipment:	Screwing
With screws:	Kyllä
Housing feed-through by break-out opening:	Kyllä
Housing feed-through by seal membrane:	Ei
Housing feed-through by nozzle:	Ei
Housing feed-through by step membrane:	Ei
For tube diameter:	20/25 mm
Pipe locking:	Ei
Pipe locking optional:	Kyllä
Inlet from the rear:	Kyllä
Number of inlets:	9
Material:	Plastic
Halogen free:	Kyllä
Surface protection:	Untreated
Colour:	White
Degree of protection (IP):	IP3X
Cover model:	Blind cover

# Tuotekortti

AU4.2 Mounting box White IP3X



Transparent cover:	Ei
Cover attachment:	Snapped on
Sealable:	Ei
With screening:	Ei
Air tight:	Ei
Clamp position fixed:	Ei
Luminaire hook mounting:	Ei
Special application:	None
With partition panel:	Ei