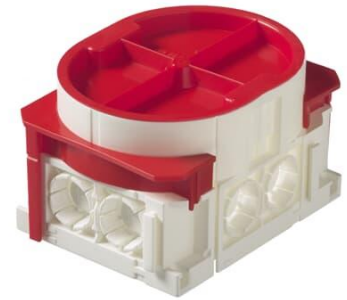


Mounting box

Mounting box for flat socket outlet



Tyyppi: AU81

Tuotekoodi: 2TKA00003222

GTIN: 6438199004839



The box is mentioned for flat socket outlet (for example 302EUJT) installations with the flexible pipe. There is six knock outs for 16 mm pipes and two for the 20 mm pipe. In the bottom there is two knock outs for the bottom inlets. The mounting box includes two red half circles enabling installation on boards with a thickness of 12- 26 mm. Made of halogen free material (IEC/61249-2-21) and fulfills the requirements of the glow wire test according to the standard IEC/EN60670: 2005 (850 °C).

Tekniset tiedot

Pakkaus

Paketti:	30
Yksikkö:	kpl

ETIM Data

ETIM Version:	ETIM-9.0
ETIM Class:	EC002601
Mounting method:	Flush mounted (plaster)
Shape:	Rectangular
Construction type:	Device connection box (round/square)
Model:	One and a half
Provided with revolving ring:	Ei

Connectable:	Kyllä
Equipped with:	None
Length:	96 mm
Width:	74 mm
Depth:	96 mm
Inner depth:	54 mm
For number of electric fittings:	1
Mounting switching equipment:	Screwing
With screws:	Kyllä
Housing feed-through by break-out opening:	Kyllä
Housing feed-through by seal membrane:	Ei
Housing feed-through by nozzle:	Ei
Housing feed-through by step membrane:	Ei
For tube diameter:	16 mm
Pipe locking:	Kyllä
Pipe locking optional:	Ei
Inlet from the rear:	Kyllä
Number of inlets:	8
Material:	Plastic
Halogen free:	Kyllä
Surface protection:	Untreated
Colour:	White
Degree of protection (IP):	IP3X
Transparent cover:	Ei
Cover attachment:	Snapped on
Sealable:	Ei
With screening:	Ei
Air tight:	Ei
Clamp position fixed:	Ei
Luminaire hook mounting:	Ei
Special application:	None