

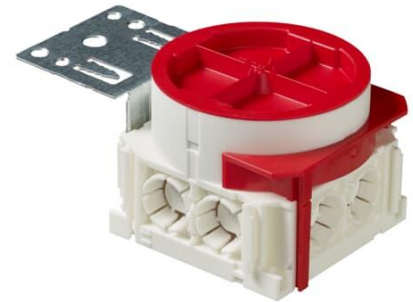
Mounting box

Mounting box with truss fixture

Tyyppi: AU80.2

Tuotekoodi: 2TKA00002541

GTIN: 6438199004273



The box is mentioned for the installations with the flexible pipe. There is six knock outs for 16 mm pipes and two for the 20 mm pipe. In the bottom there is two knock outs for the bottom inlets. The mounting box includes a rotating, steplessly adjustable extension ring with two locking wings. A truss fixture and one red half circle are enabling installation on boards with a thickness of 12- 39 mm. The minimum installation depth is 45 mm and overall height 58-73 mm. Made of halogen free material (IEC/61249-2-21) and fulfills the requirements of the glow wire test according to the standard IEC/EN60670: 2005 (850 °C).

Tekniset tiedot

Sähkösuureet

Operating voltage:	400 V
--------------------	-------

Thermal conditions

Operating temperature:	-25 ... 90 °C
------------------------	---------------

Pakkaus

Paketti:	60
Yksikkö:	kpl

ETIM Data

ETIM Version:	ETIM-9.0
ETIM Class:	EC002601
Mounting method:	Flush mounted (plaster)
Shape:	Round
Construction type:	Device connection box (round/square)
Model:	Single
Provided with revolving ring:	Kyllä
Connectable:	Kyllä
Equipped with:	Mounting plate
Diameter:	71 mm
Length:	124 mm
Width:	74 mm
Depth:	124 mm
Inner depth:	54 mm
For number of electric fittings:	1
Mounting switching equipment:	Screwing
With screws:	Kyllä
Housing feed-through by break-out opening:	Kyllä
Housing feed-through by seal membrane:	Ei
Housing feed-through by nozzle:	Ei
Housing feed-through by step membrane:	Ei
For tube diameter:	16 mm
Pipe locking:	Kyllä
Pipe locking optional:	Ei
Inlet from the rear:	Kyllä
Number of inlets:	8
Material:	Plastic
Halogen free:	Kyllä
Surface protection:	Untreated
Colour:	White
Degree of protection (IP):	IP3X
Transparent cover:	Ei

Tuotekortti

Mounting box with truss fixture



Cover attachment:	Snapped on
Sealable:	Ei
With screening:	Ei
Air tight:	Ei
Clamp position fixed:	Ei
Luminaire hook mounting:	Ei
Special application:	None