

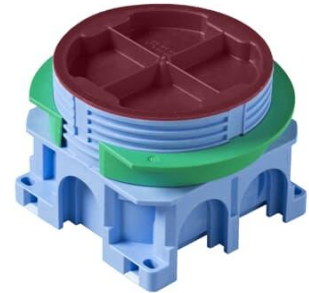
Mounting box

for 12-13/24-26 mm board

Tyyppi: AU60.5

Tuotekoodi: 2TKA00001481

GTIN: 6438199003405



The mounting box has a total of six knock-out inlets, two of which are on the same side. The bottom of the box provides access for two rear inlets. The green adapter ring, delivered with the box, is used in single-board walls (12-13 mm). The ring is removed when the wall thickness is two boards (24-26 mm). The boxes can be connected to each other with the PMR474 interconnector. Made of halogen free material (IEC/61249-2-21) and fulfills the requirements of the glow wire test according to the standard IEC/EN60670: 2005 (850 °C).

Tekniset tiedot

Thermal conditions

Operating temperature:	-25 ... 60 °C
------------------------	---------------

Pakkaus

Paketti:	80
Yksikkö:	kpl

ETIM Data

ETIM Version:	ETIM-9.0
ETIM Class:	EC002601
Mounting method:	Flush mounted (plaster)
Shape:	Round

Construction type:	Device connection box (round/square)
Model:	Single
Provided with revolving ring:	Ei
Connectable:	Kyllä
Equipped with:	None
Diameter:	71 mm
Length:	71 mm
Width:	71 mm
Depth:	71 mm
Inner depth:	54 mm
For number of electric fittings:	1
Mounting switching equipment:	Screwing
With screws:	Kyllä
Housing feed-through by break-out opening:	Kyllä
Housing feed-through by seal membrane:	Ei
Housing feed-through by nozzle:	Ei
Housing feed-through by step membrane:	Ei
For tube diameter:	20/25 mm
Pipe locking:	Ei
Pipe locking optional:	Kyllä
Inlet from the rear:	Kyllä
Material:	Plastic
Halogen free:	Kyllä
Surface protection:	Untreated
Colour:	Blue
Degree of protection (IP):	IP44
Cover model:	Construction protective cover
Transparent cover:	Ei
Cover attachment:	Snapped on
Sealable:	Ei
With screening:	Ei
Air tight:	Ei
Clamp position fixed:	Ei

Tuotekortti

for 12-13/24-26 mm board



Luminaire hook mounting:

Ei

Special application:

None
