

Cover frame

Cover frame, Carat, 1-gang, Steel

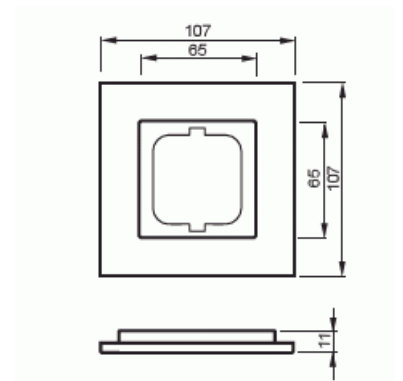
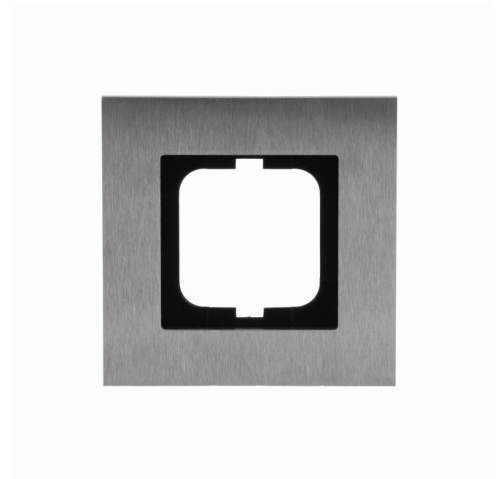
Tyyppi: 1721-860

Tuotekoodi: 2CKA001754A4254

GTIN: 4011395056790



Flush mounting cover frame for 1-gang cover plated accessories, such as switches. Material stainless steel. Cleaning with a mild, standard household detergent. The use of strong dissolvents should be avoided.



Tekniset tiedot

Pakkaus

| | |
|----------|-----|
| Paketti: | 1 |
| Yksikkö: | kpl |

ETIM Data

| | |
|-----------------------------|-------------------------|
| ETIM Version: | ETIM-9.0 |
| ETIM Class: | EC000007 |
| Number of units: | 1 |
| Mounting direction: | Horizontal and vertical |
| Number of units horizontal: | 1 |
| Number of units vertical: | 1 |
| With mounting grid: | Ei |

| | |
|-------------------------------------|-----------------|
| Flush-mounted installation: | Kyllä |
| Suitable for floor box: | Ei |
| Suitable for wall duct: | Kyllä |
| Suitable for built-in installation: | Ei |
| Label space/information surface: | Ei |
| Material: | Metal |
| Material quality: | Stainless steel |
| Halogen free: | Kyllä |
| Anti-bacterial treatment: | Ei |
| Surface protection: | Brushed |
| Surface finishing: | Matt |
| Colour: | Stainless steel |
| Transparent: | Ei |
| With hinged lid: | Ei |
| Degree of protection (IP): | IP20 |
| Impact strength: | IK03 |
| Type of fastening: | Clamp mounting |
| Width: | 107 mm |
| Height: | 107 mm |
| Depth: | 11 mm |
| Built-in width: | 63 mm |
| Built-in height: | 63 mm |
| Diameter bore hole (opening): | 71 mm |