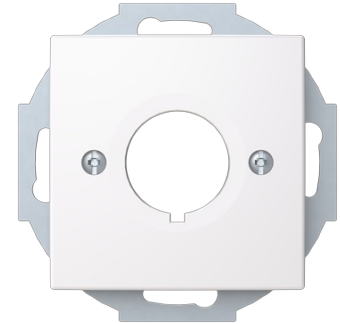


Cover plate

Cover Plates (partly incl. Insert) Bore hole 1 gang white - Busch-balance SI



Tyyppi: 2533-916-510

Tuotekoodi: 2CKA001724A4429

GTIN: 4011395316283

With screw-type terminal. Fixed with central locknut. As cover for pilot devices with a diameter of 22.5 mm Without claws.

Tekniset tiedot

Luokitus

Suitable for degree of protection (IP):	IP20
---	------

Pakkaus

Paketti:	1/10
Yksikkö:	kpl

ETIM Data

ETIM Version:	ETIM-9.0
ETIM Class:	EC000018
Assembly arrangement:	Basic element with central cover plate
Utilization:	Other
Support ring:	Ei
With dust cover:	Ei
With hinged lid:	Ei
Outlet direction:	Straight
Imprintable label:	Without indication field

With imprint:	Ei
Mounting method:	Flush mounted (plaster)
Material:	Plastic
Material quality:	Thermoplastic
Halogen free:	Ei
Anti-bacterial treatment:	Ei
Surface protection:	Untreated
Surface finishing:	Glossy
Colour:	White
RAL-number (similar):	9003
Transparent:	Ei
Type of fastening:	Mounting with screw
Number of modules (module system):	1
With buses/couplings:	Ei
Suitable for number of connectors:	1
With strain relief:	Ei
Shielded buses:	Ei
Shielded housing:	Ei
Luster terminal:	Ei
With lighting:	Ei
Device width:	71 mm
Device height:	71 mm
Device depth:	18.1 mm
Min. depth of built-in installation box:	32 mm