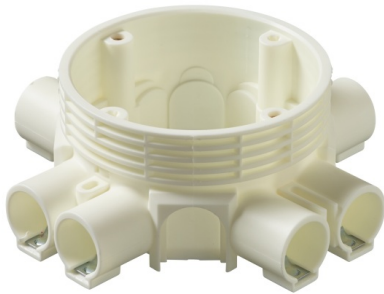


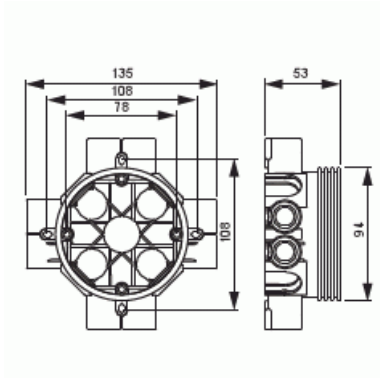
Junction box

Type: AU8

GTIN: 6410011521083



The AU8 junction box is 53 mm high and has eight inlets for Ø 20 conduits. The box also has knock-outs for 4 side inlets and 4 bottom inlets. In wall installation the box can be attached with a AS13.12 support. Made of halogen free material (IEC/61249-2-21) and fulfills the requirements of the glow wire test according to the standard IEC/EN60670: 2005 (850 °C). Max amount of conductors 30.



Technical specification

General Information

| | |
|-------------|--------------|
| Product ID: | 2TKA130033G1 |
|-------------|--------------|

Packing

| | |
|----------|-----|
| Package: | 100 |
| Unit: | PCS |

ETIM Data

| | |
|--------------------|-------------------------|
| Mounting method: | Flush mounted (plaster) |
| Shape: | Round |
| Construction type: | Cable junction box |
| Model: | Single |

Product Card

Junction box



| | |
|--|------------|
| Provided with revolving ring: | No |
| Connectable: | No |
| Equipped with: | None |
| Diameter: | 94 mm |
| Length: | 135 mm |
| Width: | 135 mm |
| Depth: | 135 mm |
| Inner depth: | 49 mm |
| For number of electric fittings: | 1 |
| Mounting switching equipment: | Screwing |
| With screws: | No |
| Housing feed-through by break-out opening: | Yes |
| Housing feed-through by seal membrane: | No |
| Housing feed-through by nozzle: | Yes |
| Housing feed-through by step membrane: | No |
| For tube diameter: | 20/25 mm |
| Pipe locking: | Yes |
| Pipe locking optional: | No |
| Inlet from the rear: | Yes |
| Number of inlets: | 8 |
| Number of included spouts: | 8 |
| Material: | Plastic |
| Halogen free: | Yes |
| Surface protection: | Untreated |
| Colour: | White |
| Transparent cover: | No |
| Cover attachment: | Snapped on |
| Sealable: | No |
| With screening: | No |
| Air tight: | No |
| Clamp position fixed: | No |
| Luminaire hook mounting: | No |
| Special application: | None |

