



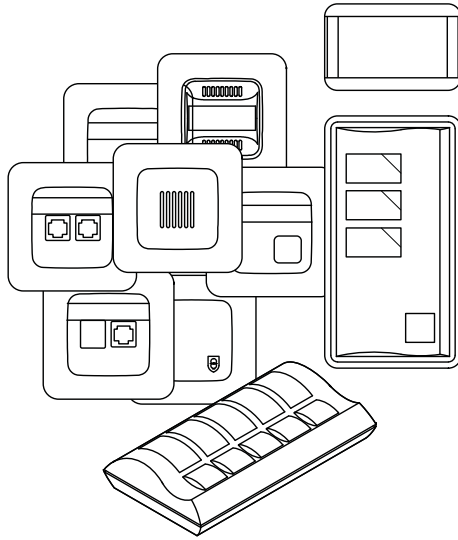
Signal Products Office systems

BUSCH-JAEGER

Power and productivity
for a better world™ **ABB**



Signal Products / Office systems



Easy

- Design
- Install
- Use
- Maintain

Reliable

- Simple solutions
- Decentralized systems

Economical

- Pay for needed functions only
- Standard components
- Maintenance free solutions

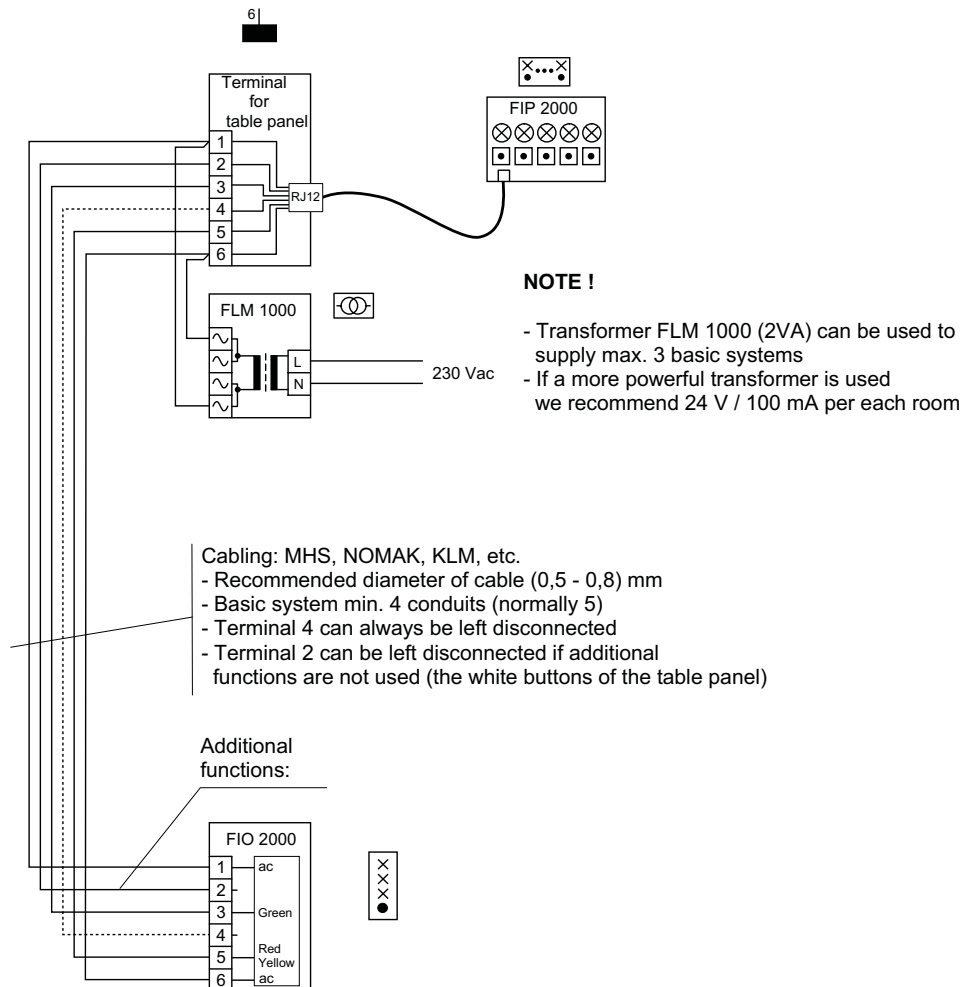
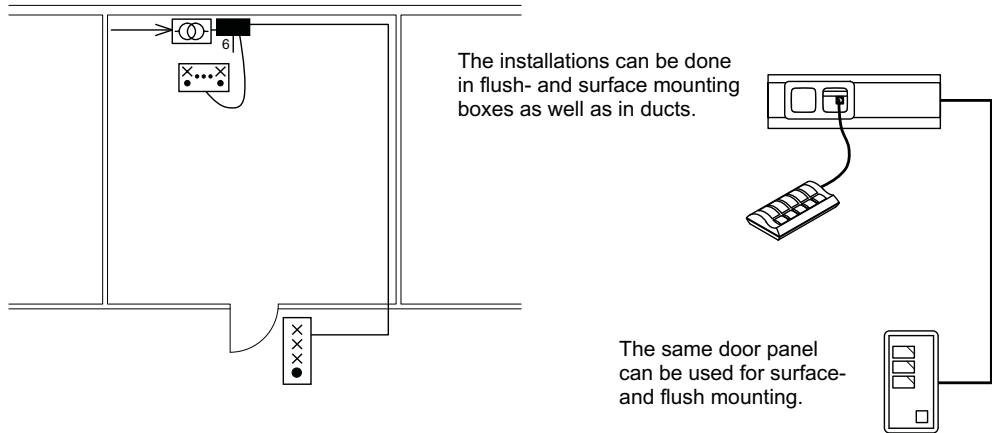
Table of contents

Basic system	
- System description	2
Connections to telephone systems	
- Solutions for analog and ja digital phones	3
System extension	
- Several door- and table panels and adapter relay	4
- Additional red light	5
- Additional buzzer	5
- Connection to panic alarm system	5
- Control of locking	5
Example connections	
- Basic system for analog telephones	6
- Basic system for digital telephones	6
- System connected to universal cabling	7
- System with several door and table panels	8
- Director and secretary systems connected together	9
Panic alarm systems	
- Panic alarm 1 (panel board solution)	10
- Panic alarm 2 (alarm in corridor)	11
- Panic alarm 3 (alarms to adjacent rooms)	12
- Panic alarm 4 (solution for courthouse)	13
Technical specifications	
- Signal products	14-16

Basic system

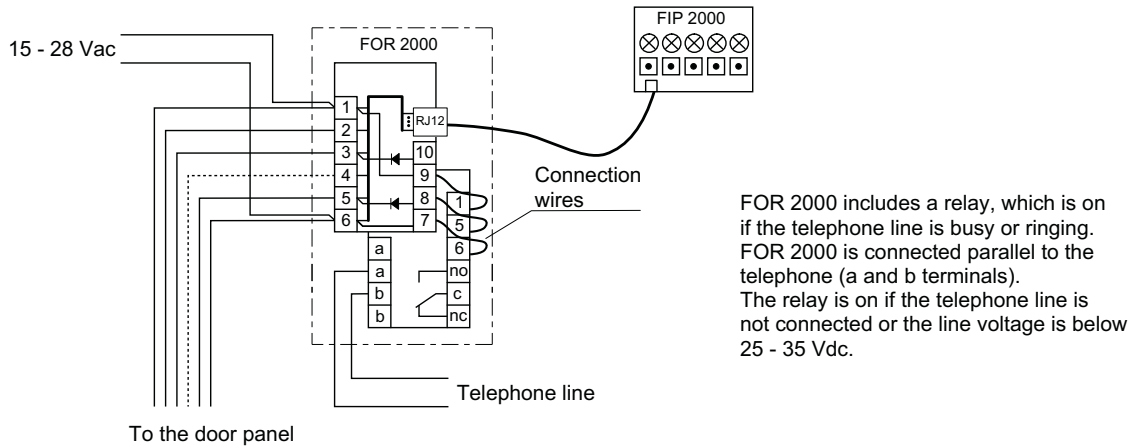
The basic system includes a door panel from which the person who wants to enter can see whether the person inside is vacant, occupied or busy on the phone. By pushing the button on the door panel the person outside can "ring the doorbell".

The table panel can be used to control the red, yellow and green signal lights of the door panel. The yellow signal light can be switched on automatically during the telephone conversation.



Connections to telephone systems

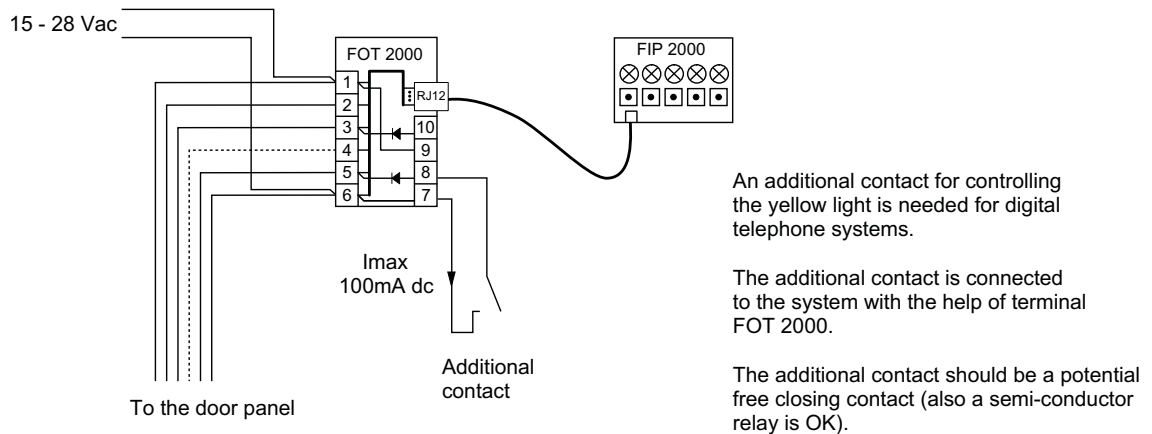
The yellow signal light can be switched on during telephone conversations and/or when the phone is ringing. When analog telephones are used, the control of the yellow signal light is done with the terminal FOR 2000. Digital phones require an additional contact for this purpose.



Picture: Controlling the yellow signal light in analog telephone systems

NOTE !

FOR 2000 can be used to both analog and digital telephone systems. The digital system is connected in such a way that the connection wires (3 pcs) are removed and the telephone line is left disconnected. The additional contact of the digital phone is connected to terminals 7-8 (Refer to the picture below).

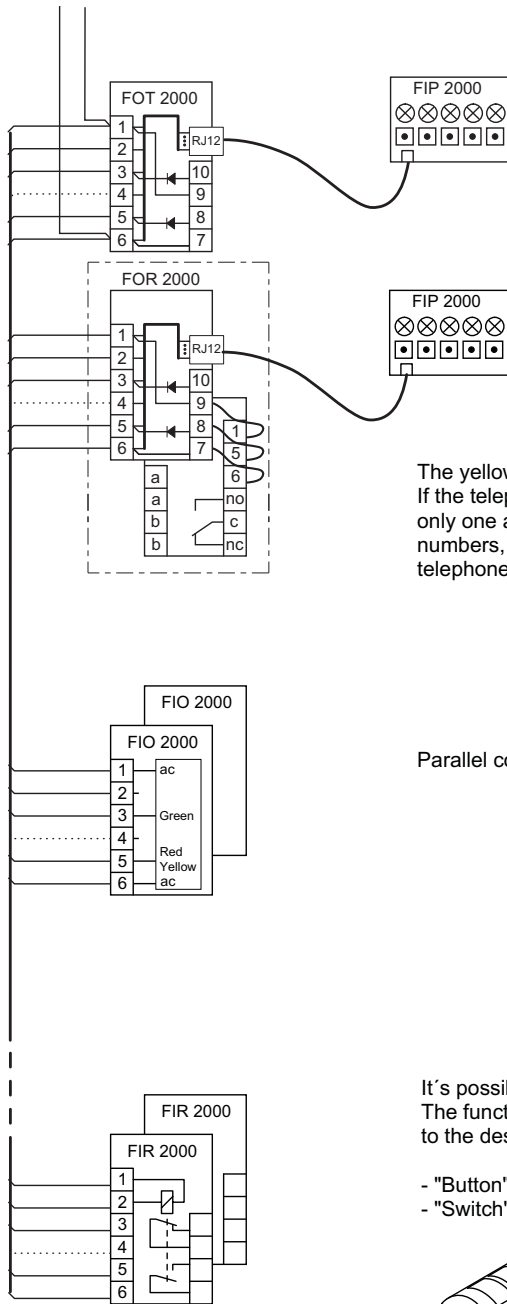


Picture: Controlling the yellow signal light in digital telephone systems (principle diagram)

System extension

Several door- and table panels can be connected to the same system. The system also comprises an adapter relay, FIR 2000, which gives the possibility to connect the system to for example panic alarm and access control systems.

The supply voltage (15 - 28 Vac) can be connected to any device in the system in terminals 1 and 6.



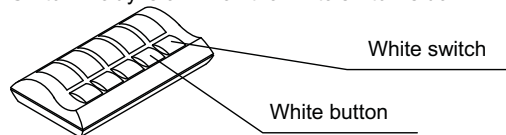
Each system can include several table panels, but note that when one table panel switches for example the red light on, then it's impossible to switch off the light with another table panel. The signal lights in both table panels show at the same time the status of the lights of the door panel.

The yellow signal light can be controlled by several telephones. If the telephones are connected in parallel (same extension number) only one adapter relay is needed. If the telephones have different extension numbers, should the both telephones have their own adapter relays (digital telephone systems could also have different solutions).

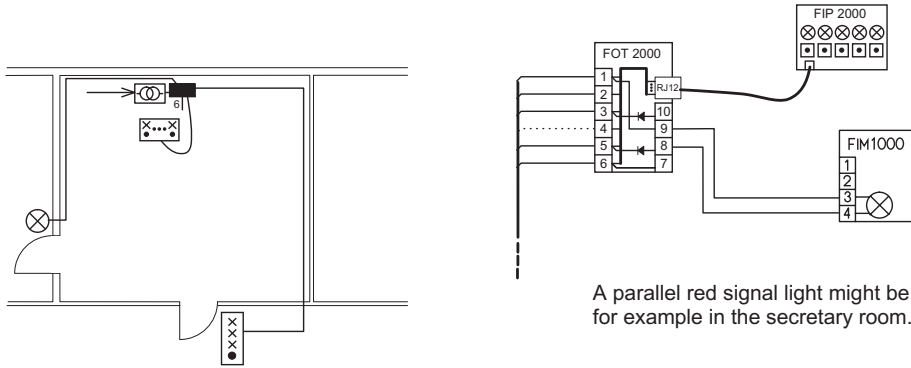
Parallel connected door panels operate normally.

It's possible to connect several adapter relays in parallel. The function selectors of the adapter relays have to be set to the desired position:

- "Button": relay is on when the white button is pressed
- "Switch": relay is on when the white switch is down

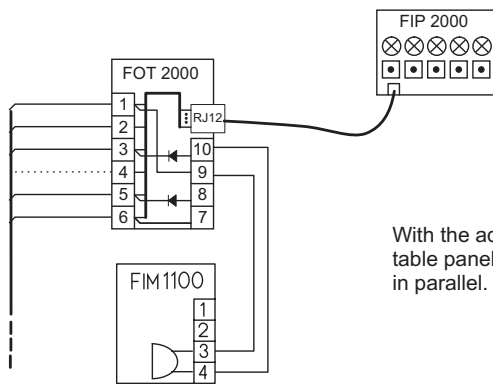


Additional red light



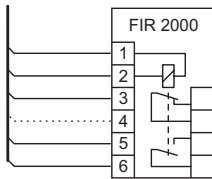
A parallel red signal light might be needed for example in the secretary room.

Additional buzzer



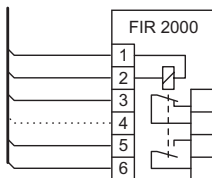
With the additional buzzer it's possible to make the sound of the table panel more effective or it can be installed in another room in parallel.

Connection to panic alarm system



The system can be connected to panic alarm systems with the help of the adapter relay FIR 2000. The relay includes an opening as well as a closing potential free contact. It's recommended to set the function selector of the adapter relay to position "button". At this position the relay is on when pushing the white button of the table panel.

Control of locking

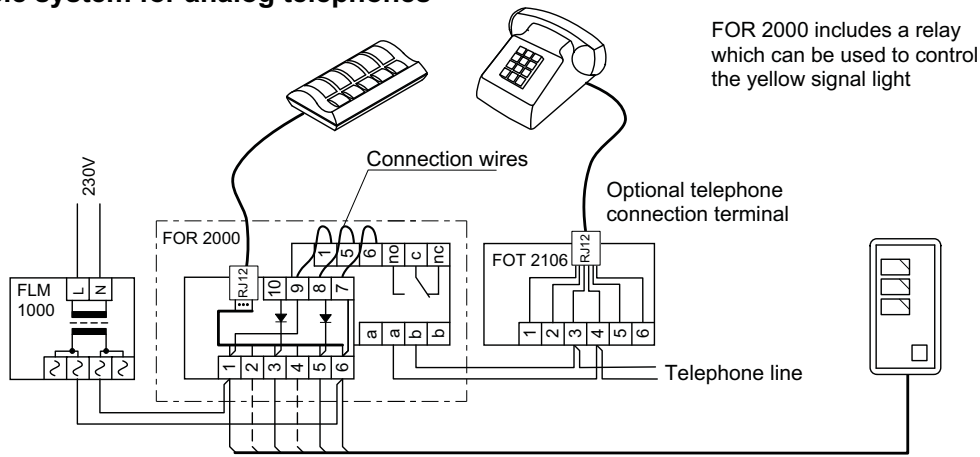


FIR 2000 can also be used to control the locking of a door. When the function selector of the adapter relay is set to position "button", it's possible to control the electrical lock to open. When the function selector is at "switch" position, it's possible to control the motor switch to close and open.

NOTE !

Max. loading capacity of the contact:
1A ac/dc, 30W / VA, 42Vac, 60Vdc

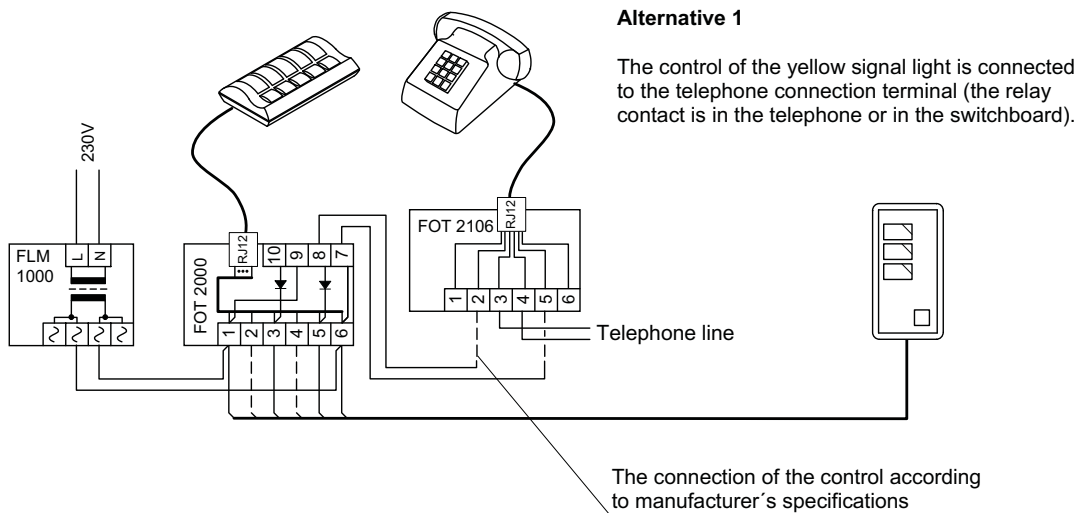
Basic system for analog telephones



NOTE !

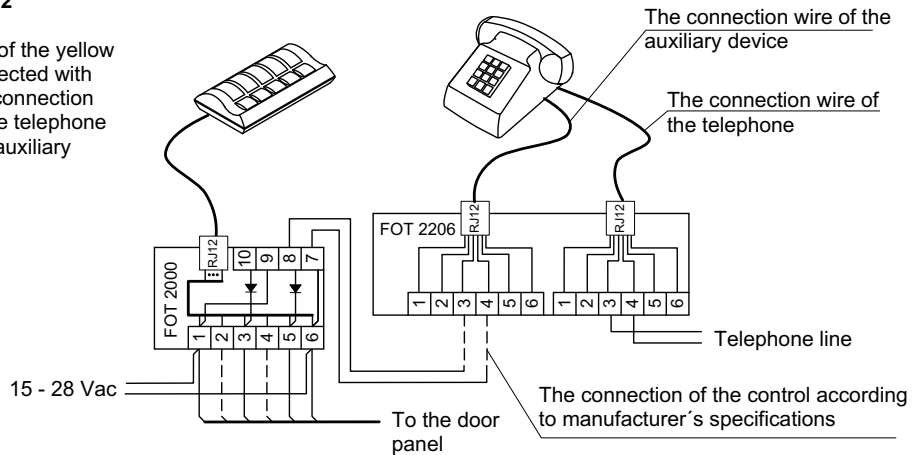
- If the telephone line is disconnected, the yellow light is continuously on. By disconnecting the connection wires of FOR 2000 (or wire 5-8) it's possible to switch off the light
- The additional contact of the digital phone can also be connected in terminals 7-8 of FOR 2000. In this case the telephone line is not connected and the connection wires are removed

Basic system for digital telephones



Alternative 2

The control of the yellow light is connected with a separate connection wire from the telephone or from the auxiliary device.



System connected to universal cabling

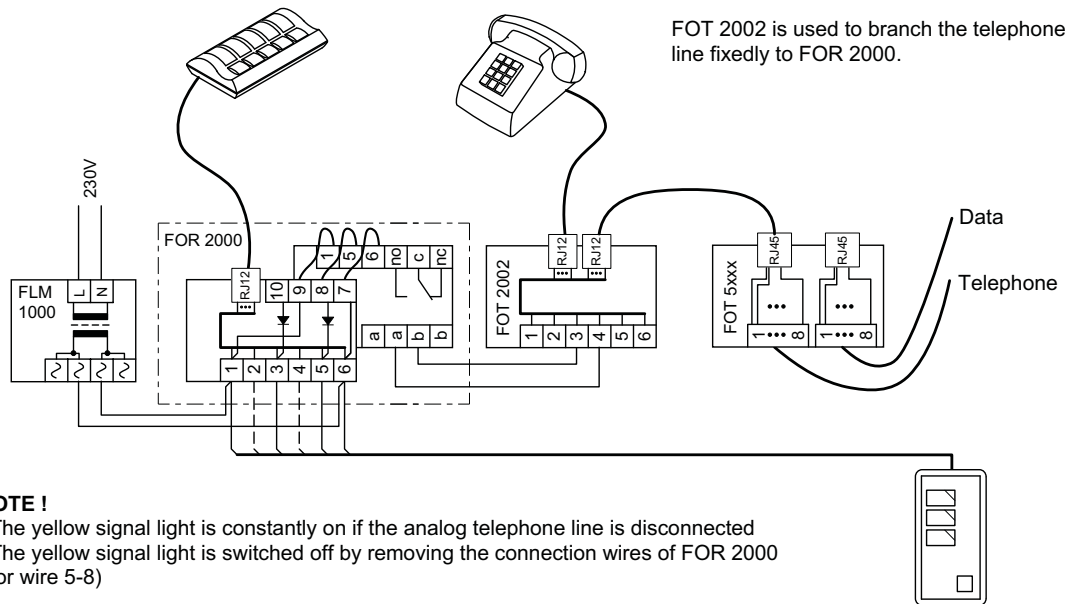
It's impossible to make fixed additional connections or branchings in the terminals of universal cabling without degrading the data transfer ability. The office signal light system has to be semi-fixed to the telephone systems if the telephone connections have been made with universal cabling.

NOTE !

This system is a useful design solution, because normally at the design stage it's not known which kind of telephone system the building will have. It's possible to connect the analog as well as the digital telephone systems to the system with the help of the terminal FOT 2002. The final connection can be done with separate connection wires. The modifications can usually be done by removing only the centreplate of FOT 2002.

Analog telephone system

FOT 2002 is used to branch the telephone line fixedly to FOR 2000.

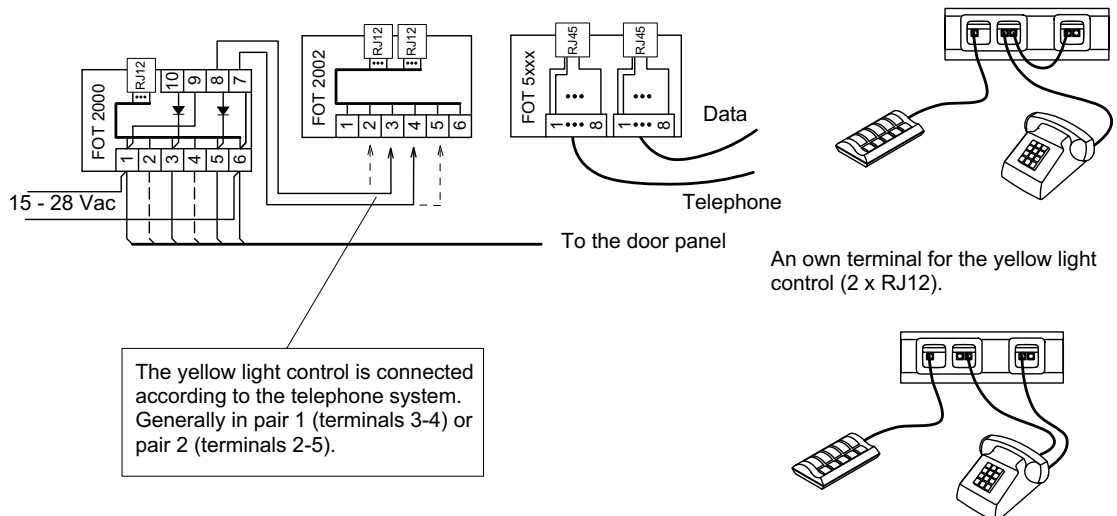


NOTE !

- The yellow signal light is constantly on if the analog telephone line is disconnected
- The yellow signal light is switched off by removing the connection wires of FOR 2000 (or wire 5-8)

In case of digital telephone systems the above mentioned system can be modified by replacing the connection terminal of the table panel FOR 2000 with the connection terminal FOT 2000, because the contact for the analog telephone is not needed.

The yellow signal light control is connected to an "extra output".



The yellow light control is connected according to the telephone system. Generally in pair 1 (terminals 3-4) or pair 2 (terminals 2-5).

An own terminal for the yellow light control (2 x RJ12).

System with several door and table panels

Both doors has their own door panels.

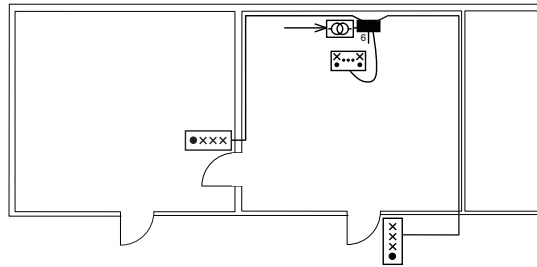
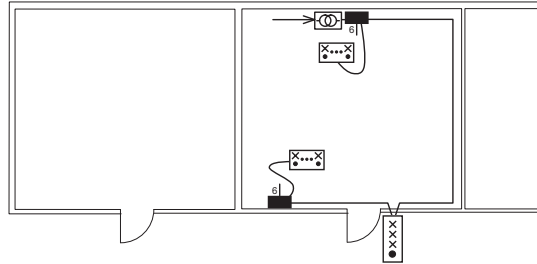
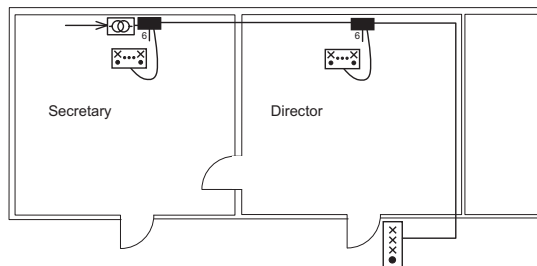


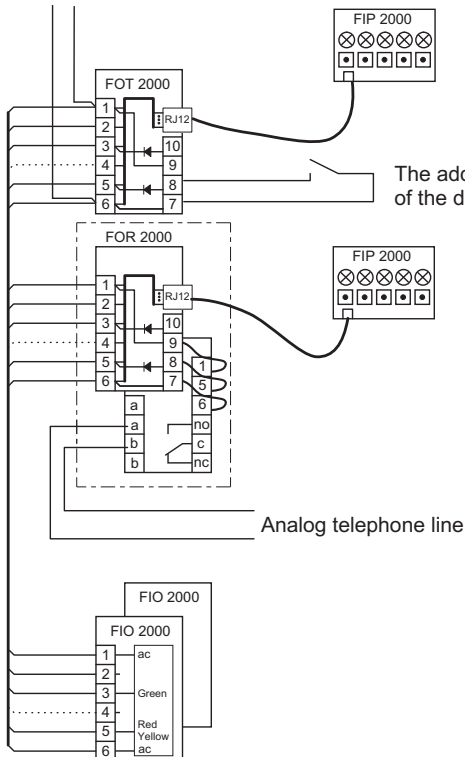
Table panel on the work and negotiating table.



The secretary can control the director's door panel with a parallel table panel.



15 - 28 Vac



The additional contact of the digital phone

Analog telephone line

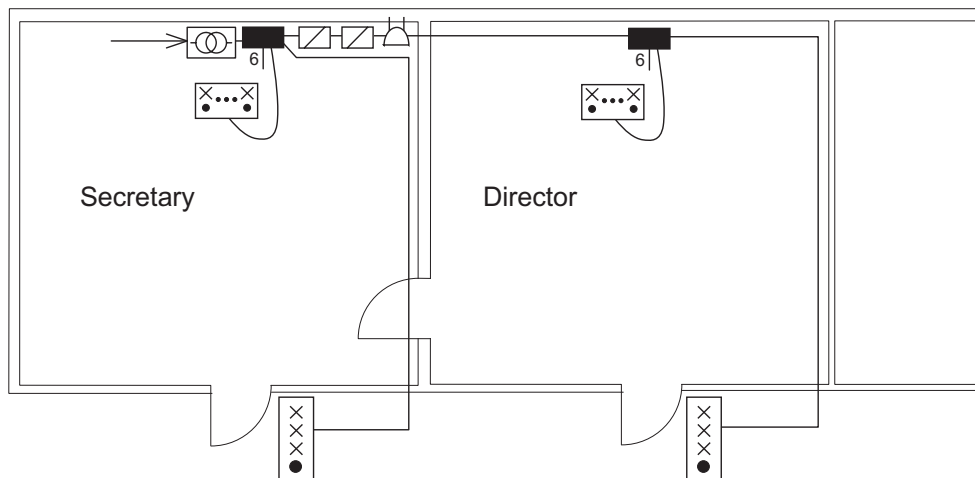
When the system includes several table panels it's to be observed that when one table panel switches for example the red light on, then it's not possible to switch off the light with the other table panel. However the signal lights in both table panels show the status of the lights of the door panel.

The yellow signal light can be controlled by several telephones. If the telephones are in parallel (same extension number) only one adapter relay is needed. If the telephones have different extension numbers, should the telephones have their own adapter relays. Digital systems may differ from the above mentioned.

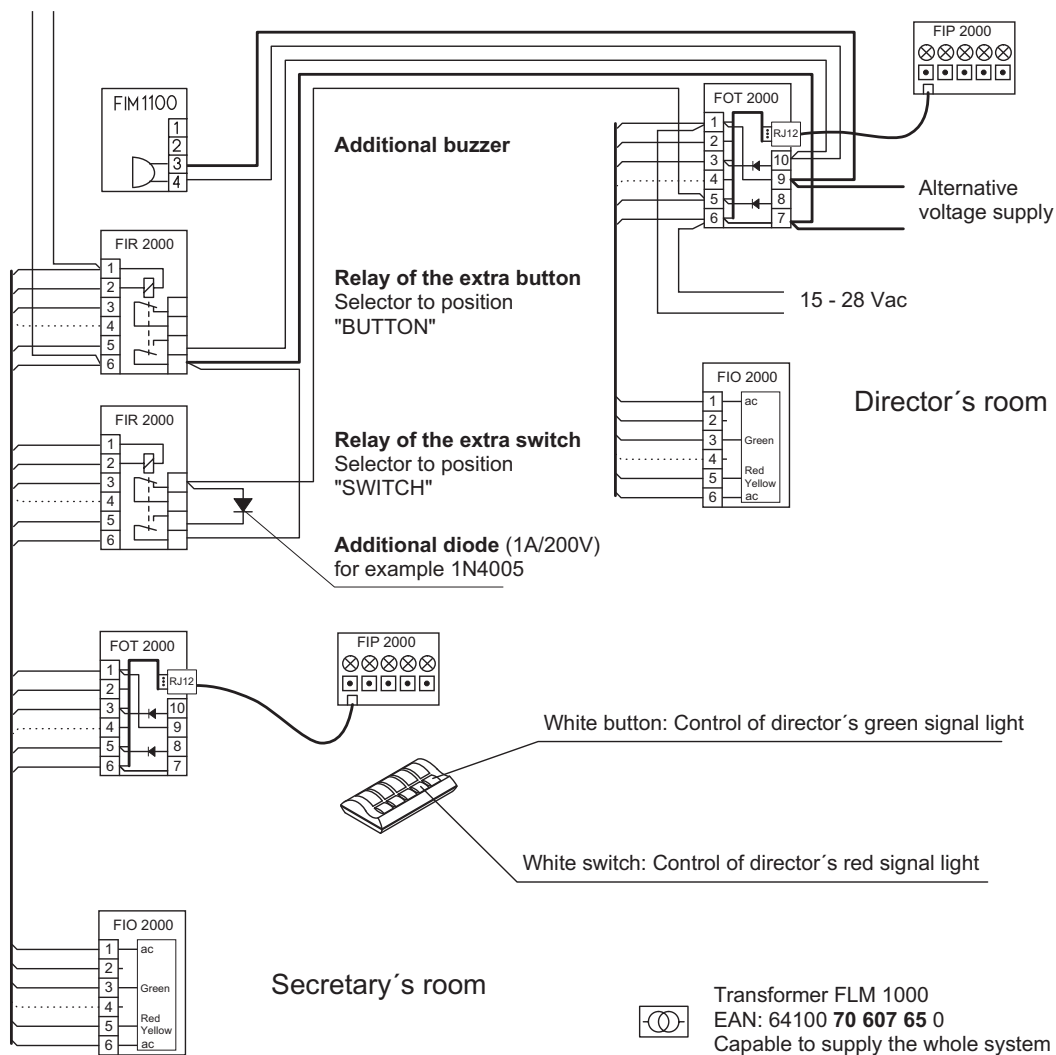
Parallel connected door panels operate normally.

Director and secretary systems connected together

The secretary hears the sound of the additional buzzer if someone wants to visit the director. The secretary can switch on the director's red signal light with the white switch on her table panel. With the white button she can control the green signal light.

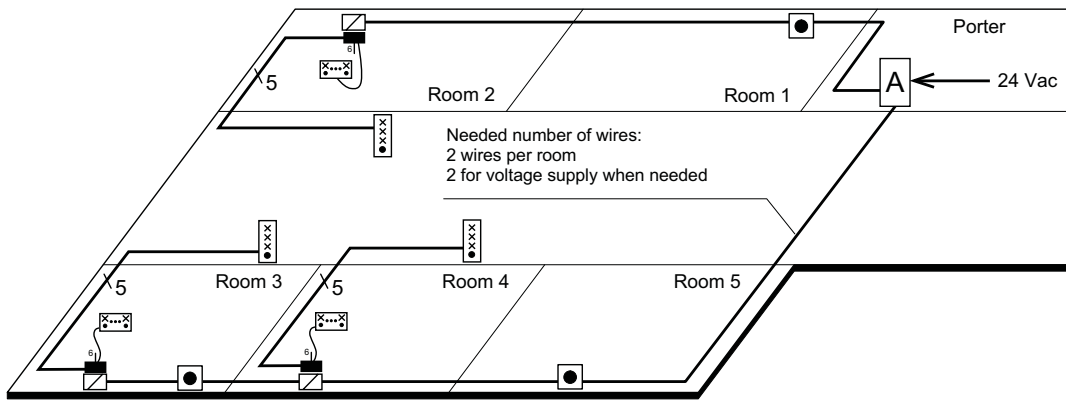


15 - 28 Vac

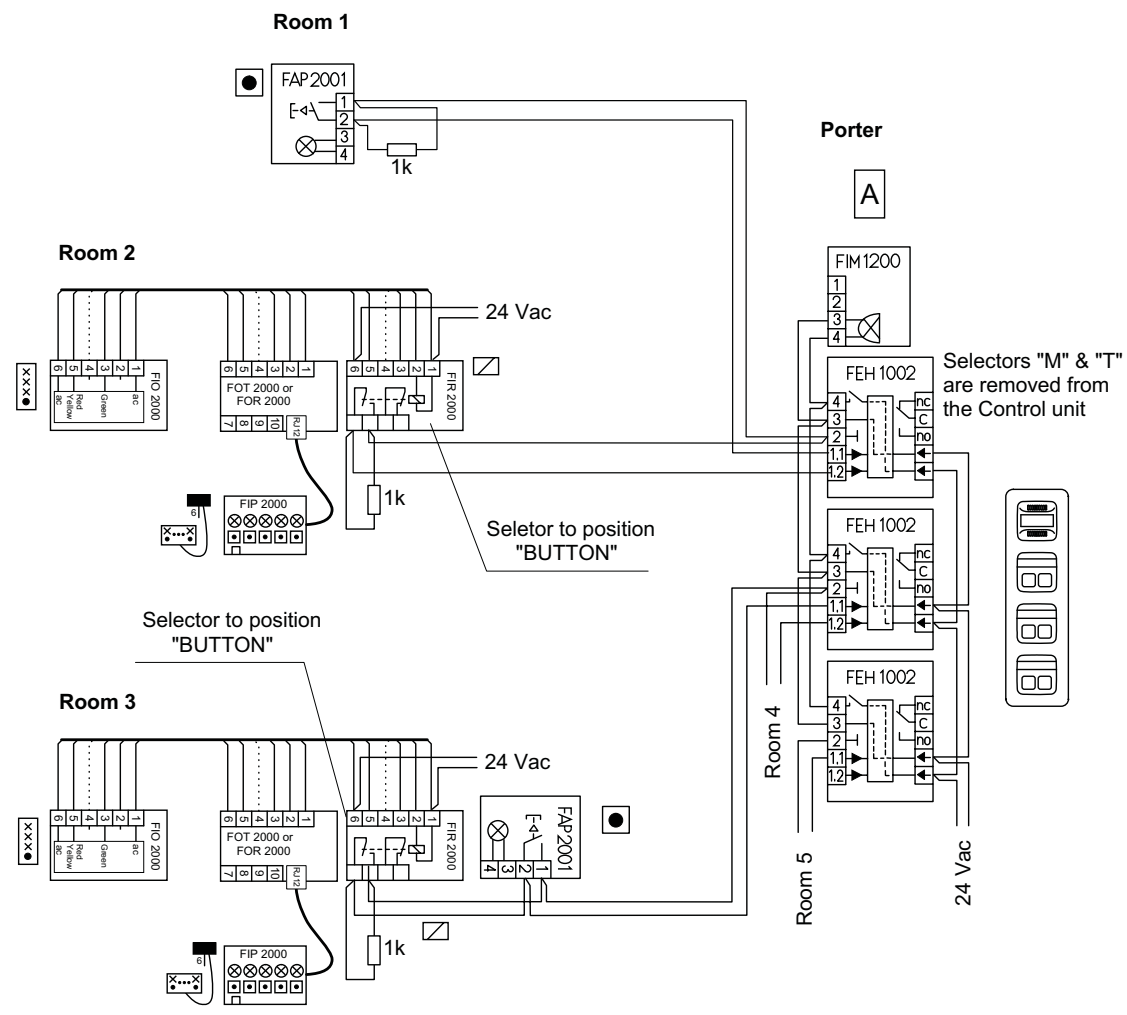


Panic alarm 1

When pushing the alarm button in one of the rooms the alarm goes to the alarm panel in the porter's room. In the alarm panel there's a buzzer and a flashing signal light.

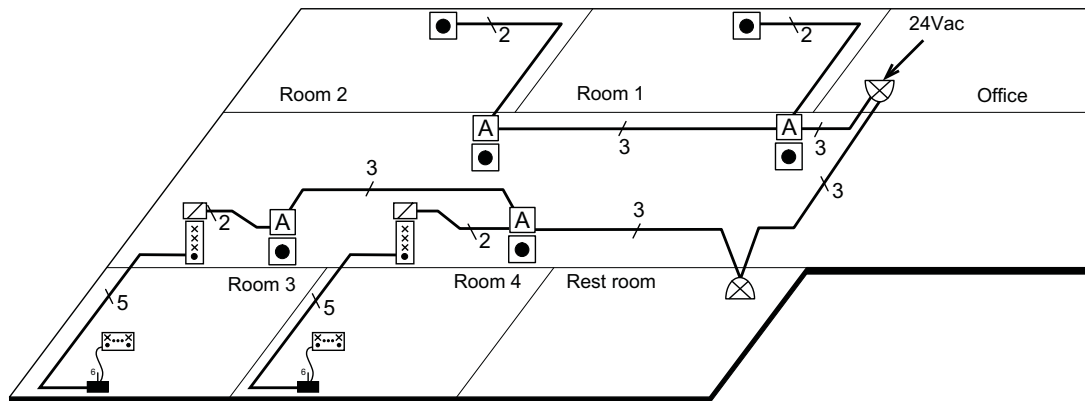


- A**
- According to the need
 - 1-loop Control unit FEH 1002
EAN: 64100 70 607 12 4
 - Alarm unit FIM 1200
EAN: 64100 70 607 52 0
 - Signal button FAP 2001
EAN: 64100 70 607 21 6
 - Adapter relay FIR 2000
EAN: 64100 70 606 15 8
 - Office signal system according to the need

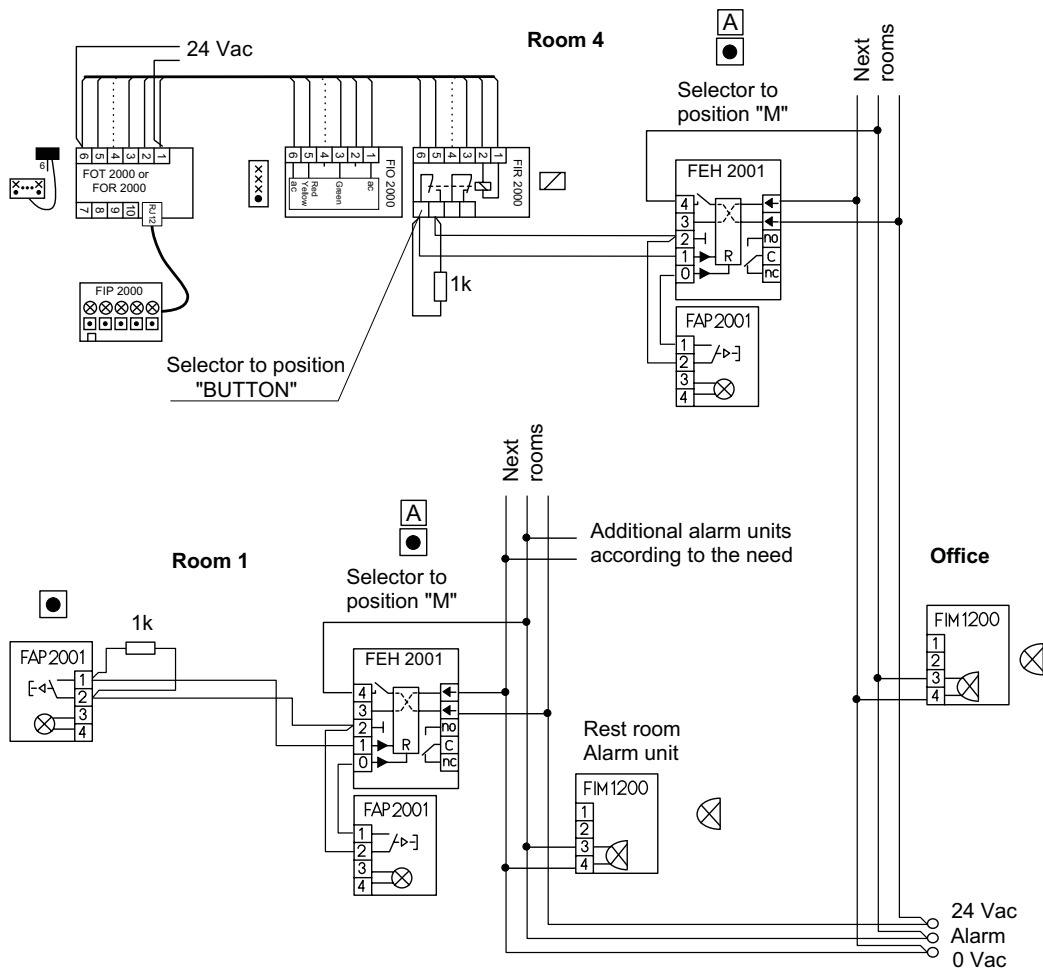


Panic alarm 2

When pushing the alarm button inside, the signal light outside the room starts to flash and the buzzer becomes active. Additional alarm units can also be installed in desired rooms. These units give an audible and a flashing visible signal if one of the rooms is alarming. The alarm is cancelled with the cancel button inside the room.

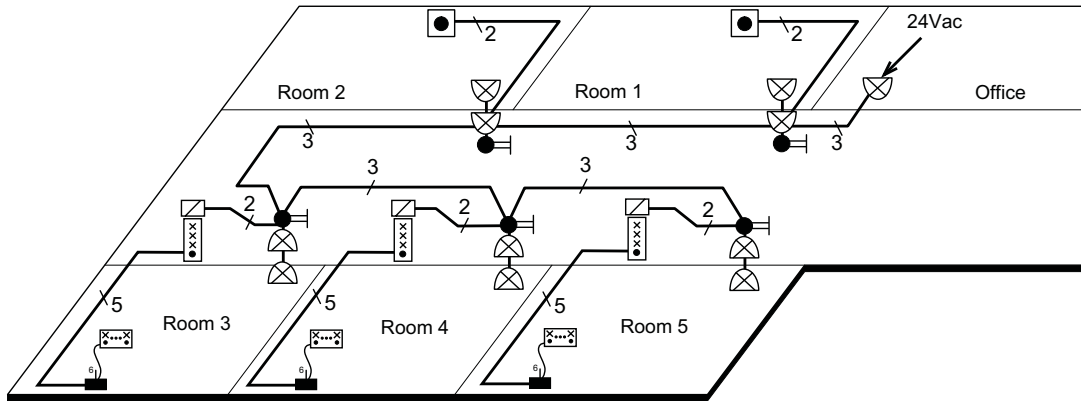


- A 1-loop Alarm unit FEH 2001
EAN: 64100 70 607 17 9
- Signal button FAP 2001
EAN: 64100 70 607 21 6
- ⊗ Alarm unit FIM 1200
EAN: 64100 70 607 52 0
- ◻ Adapter relay FIR 2000
EAN: 64100 70 606 15 8
- ⊗ Office signal system according to the need

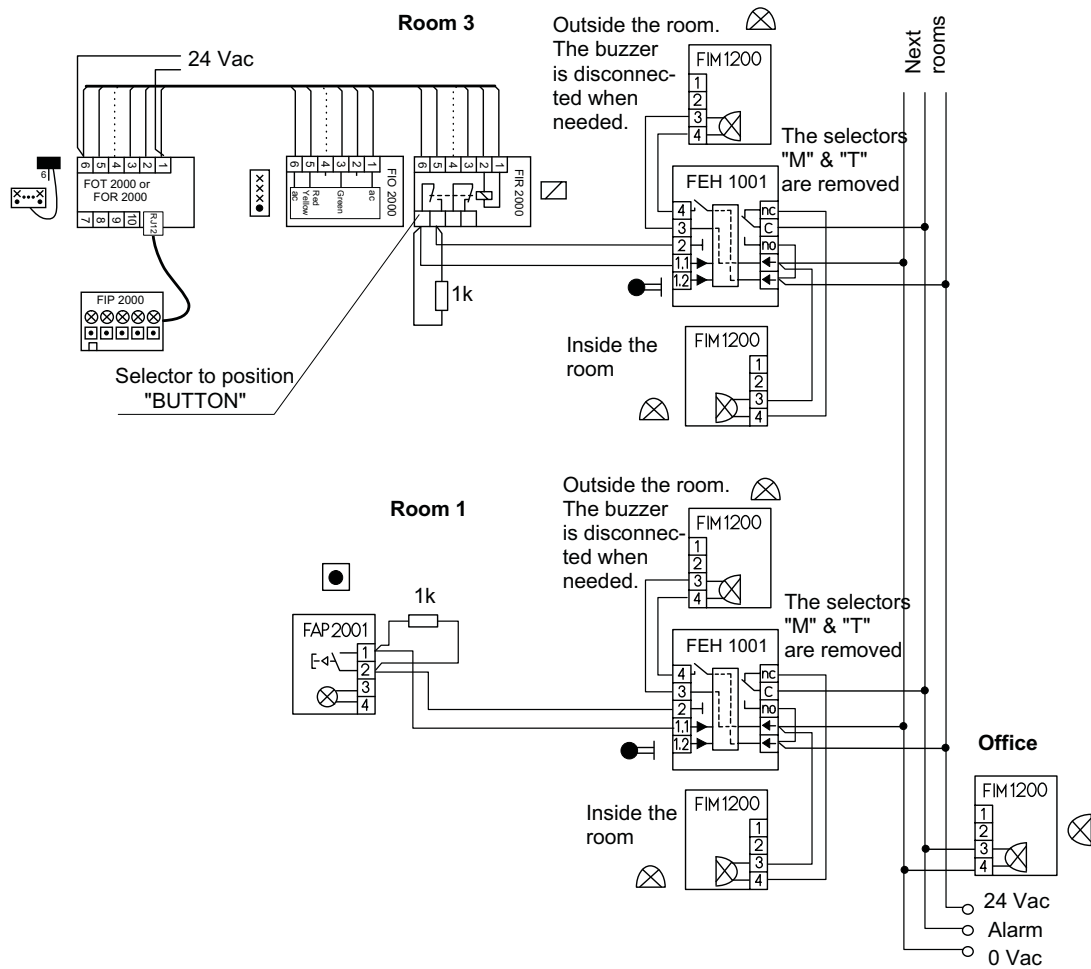


Panic alarm 3

Each room has two alarm units. One inside and the other one outside the room. If the alarm button which is inside the room is pushed, the alarm unit which is outside becomes active, but nothing happens inside the room. At the same time in the other rooms the inside installed alarm units become active, so that the colleagues can react and run to help. The alarm is cancelled with the cancel button in the room where the alarm were activated.

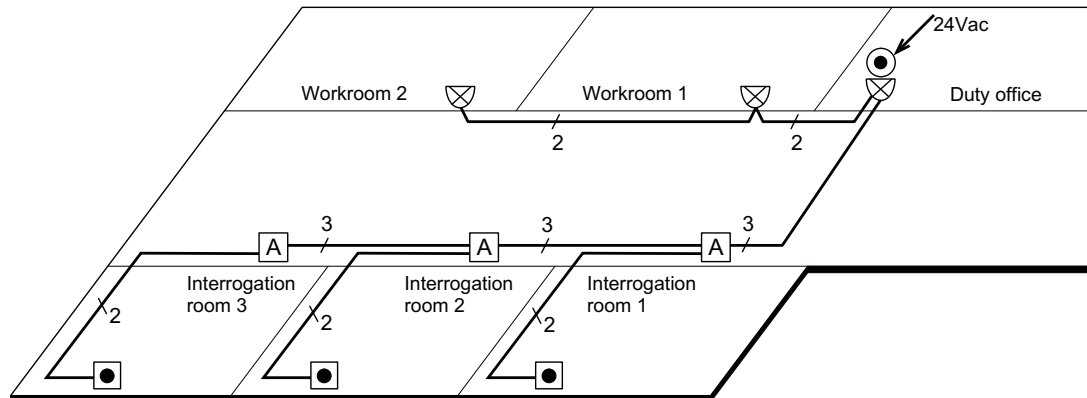


- 1-loop Control unit FEH 1001
EAN: 64100 70 607 11 7
- Signal button FAP 2001
EAN: 64100 70 607 21 6
- ⚡ Alarm unit FIM 1200
EAN: 64100 70 607 52 0
- ⊠ Adapter relay FIR 2000
EAN: 64100 70 606 15 8
- ⊠ Office signal system according to the need

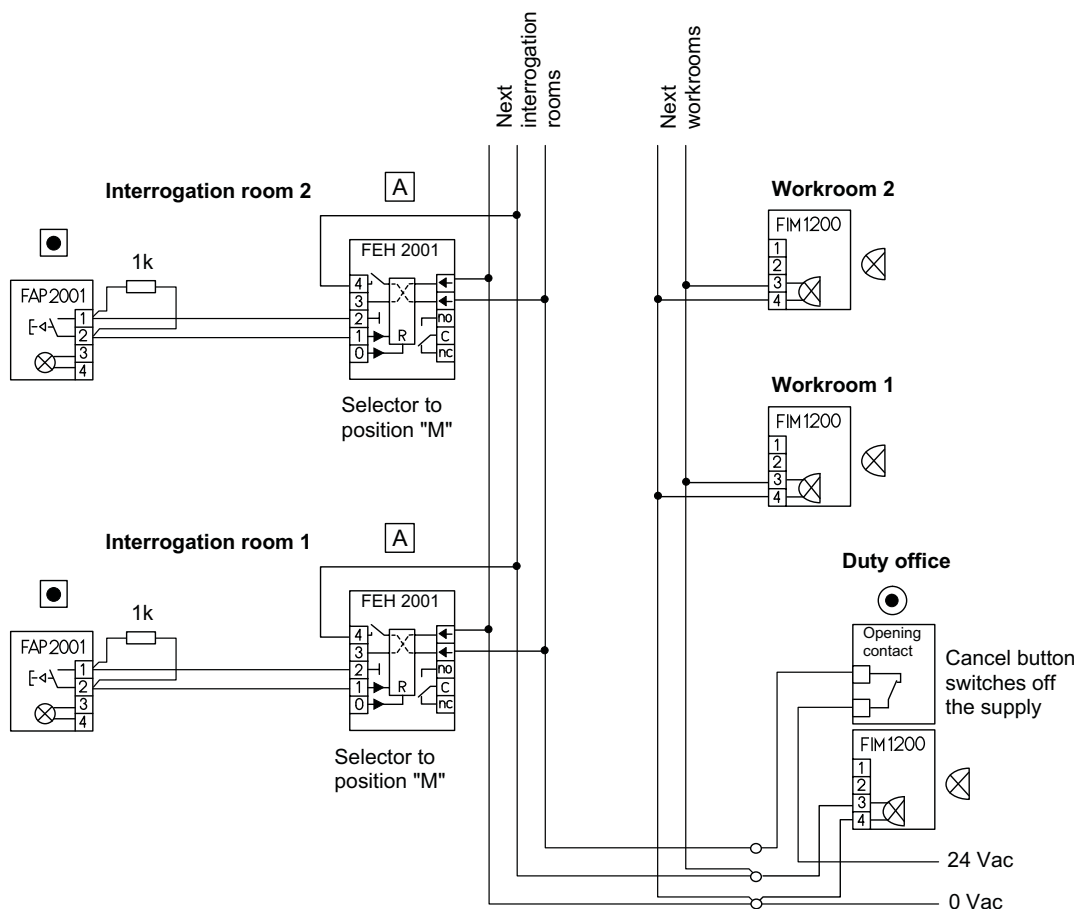


Panic alarm 4

In each interrogation room there is a panic alarm which could be used to activate all the alarm units in the workrooms and in the duty office. Outside the alarming interrogation room there is a signal light which flashes and an active buzzer. The alarm can be cancelled only with the cancel button in the duty office.



- A 1-loop Alarm unit FEH 2001
EAN: 64100 70 607 17 9
- Alarm unit FIM 1200
EAN: 64100 70 607 52 0
- Signal button FAP 2001
EAN: 64100 70 607 21 6
- for example. 1466U
EAN: 64100 21 260 11 8



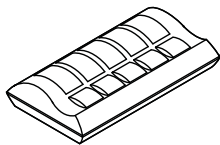


Jussi merkinantotuotteita

Myynti: Sähköliikkeit, sähköurakoitsijat sekä sähkötukkuliikkeit
 Tiedustelut: ABB Oy, Asennustuotteet, PL 16, 06101 Porvoo
 Puh: 010 22 11

Table panel FIP 2000

EAN: 64100 70 606 10 3

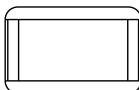


The table panel has push buttons which are used to control the red, yellow and green signal light. It also has one white button and switch which can be used to control for example door locking, lights or panic alarms. The device is delivered with a 2 m long connection cable, which has a RJ12 connector.

Operating voltage: 15 - 28 Vac, dimensions: (L x H x W) 145 x 30 x 80, weight: 240g, IP20

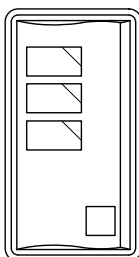
Name plate FLT 1000

EAN: 64100 70 606 30 1



Door panel FIO 2000

EAN: 64100 70 606 12 7

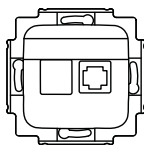


The door panel has a button, which is used to activate the buzzer of the table panel. The red, yellow and green lights of the door panel can be controlled with the table panel. The buzzer is active at the same time when the green light of the door panel is on. The device is designed for surface as well as for flush mounting.

Operating voltage: 15 - 28 Vac, dimensions: (L x H x W) 145 x 80 x 23, weight: 120g, IP20

6-pole terminal RJ -connector FOR 2000

EAN: 64100 70 606 18 9

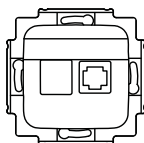


A terminal to connect the connection cable of the table panel. It includes a RJ12 type terminal and a contact for the traditional analog telephone, which switches on the yellow light of the door panel if the telephone line is busy or the telephone is ringing. The contact doesn't operate together with a digital telephone, but can be used to connect the digital telephone's auxiliary device.

Operating voltage: 15 - 28 Vac, dimensions: (L x H x W) 71 x 71 x 35, weight: 50g, IP20

6-pole terminal RJ -connector FOT 2000

EAN: 64100 70 606 13 4

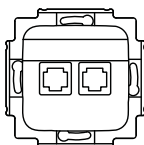


A terminal to connect the connection cable of the table panel. It includes a RJ12 type terminal, as well as terminals for connecting the digital telephone's auxiliary device. The extra contact is needed to control the yellow signal light from the telephone automatically.

Dimensions: (L x H x W) 71 x 71 x 35, weight: 35g, IP20

Terminal FOT 2002

EAN: 64100 70 606 14 1



FOT 2002 is to be used when the telephone connections are done by universal cabling and when the yellow light control is to be connected. By using FOT 2002 it's possible to avoid making fixed connections in the universal cabling.

Dimensions: (L x H x W) 71 x 71 x 35, weight 40g, IP20

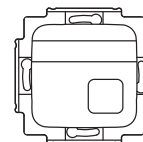
1 -loop Control unit FEH 1001

EAN: 64100 70 607 11 7

The 1-loop Control unit operates as a cancel device in panic alarm systems. The signal light of the button is flashing in alarm mode. Cancel of the alarm is done with the button on the device.

Operating voltage: 15-28 Vac/ 18-35Vdc, 70 mAac / 40 mAdc

Dimensions: (L x H x W) 71 x 71 x 40, weight: 45g, IP20



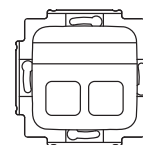
2 -loop Control unit FEH 1002

EAN: 64100 70 607 12 4

2-loop alarm units can be used to make an alarm panel, in which each alarm point has its own signal light and cancel button.

Operating voltage: 15-28 Vac/ 18-35Vdc, 110 mAac / 60 mAdc

Dimensions: (L x H x W) 71 x 71 x 40, weight: 50g, IP20



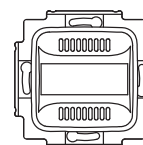
1 -loop Alarm unit FEH 2001

EAN: 64100 70 607 17 9

The 1-loop Alarm unit is equipped with a big red signal light and a buzzer, which can not be disconnected. In alarm mode the signal light is flashing and the buzzer is on. Cancel of the alarm is done with an external button or by switching off the voltage supply for a while.

Operating voltage: 15-28 Vac/ 18-35Vdc, 110 mAac / 60 mAdc

Dimensions: (L x H x W) 71 x 71 x 46, weight: 50g, IP20



Alarm unit FIM 1200

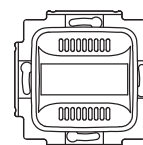
EAN: 64100 70 607 52 0

A red flashing LED signal light and a buzzer, which can be disconnected if needed.

Buzzer: 2,3kHz / 78 dB (30cm). **Also available in yellow FIM 1210.**

Operating voltage: 9,5-28 Vac / 9,5-35 Vdc, 60 mAac / 30 mAdc.

Dimensions: (L x H x W) 71 x 71 x 46, weight: 40g, IP20



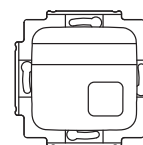
Signal button FAP 2001

EAN: 64100 70 607 21 6

A signal push button with one closing contact and a red LED signal light.

Signal light: 9,5-28 Vac/ 9,5-35Vdc, 20 mAac / 10 mAdc, Contact: 100 mA ac/dc max.

Dimensions: (L x H x W) 71 x 71 x 40, weight: 36g, IP20



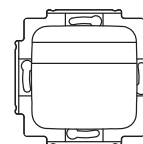
Adapter relay FIR 2000

EAN: 64100 70 606 15 8

A relay which can be installed in a mounting box. Inside there is a selector to select if it is controlled by the white button or switch of the table panel.

Max load capability 30 VA / W, 1A ac/dc, 42Vac / 60 Vdc. Transf. 15 - 28 Vac / 18 mA.

Dimensions: (L x H x W) 71 x 71 x 35, weight: 35g, IP20



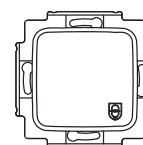
Transformer FLM 1000 SELV

EAN: 64100 70 607 65 0

Transformer to be installed in a mounting box. Short circuit protected. 230 Vac / 15 Vac.

Power / loading capacity: 2,2 VA / 150 mA. Can be connected to 16A.

Dimensions: (L x H x W) 71 x 71 x 38, weight: 130g, IP20



Installation material

Cover frames (85mm)

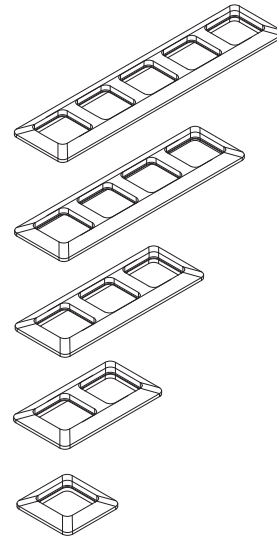
5-gang EAN-code: 64100 **21 661 151**
Type: 2515

4-gang EAN-code: 64100 **21 661 144**
Type: 2514

3-gang EAN-code: 64100 **21 661 137**
Type: 2513

2-gang EAN-code: 64100 **21 661 120**
Type: 2512

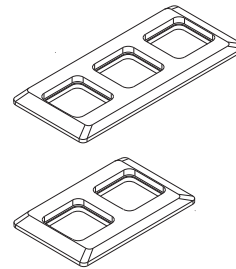
1-gang EAN-code: 64100 **21 661 113**
Type: 2511



Cover frames for ducts (100mm)

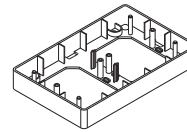
3-gang EAN-code: 64100 **21 661 335**
Type: 2513-100

2-gang EAN-code: 64100 **21 661 328**
Type: 2512-100

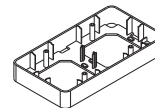


Installation frames

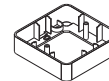
For two devices (100mm cover frame)
EAN-code: 64100 **25 161 541**
Type: 2554R-212 (suitable cover frame 2512-100)



For two devices (85mm cover frame)
EAN-code: 64100 **25 161 725**
Type: 2552R-212 (suitable cover frame 2512)

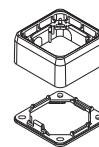


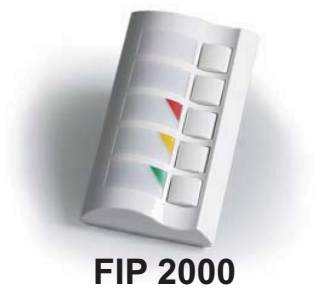
For one device (85mm cover frame)
EAN-code: 64100 **25 161 749**
Type: 2511R-212 (suitable cover frame 2511)



Surface mounting box

For one signal device only
EAN-code: 64100 **70 055 017**
Type: FLK 1010





FIP 2000



FLT 1000



FIO 2000



FOR 2000



FOT 2000



FOT 2002



FEH 1001



FEH 1002



FEH2001



FIM 1200



FAP2001



FIR 2000



FLM1000

Ota yhteyttä

ABB Oy
Asennustuotteet
Porvoon Sisäkehä 2
PL 16
06101 Porvoo
Puhelin: 010 22 11
Faksi: 010 22 54255
www.abb.fi/asennustuotteet